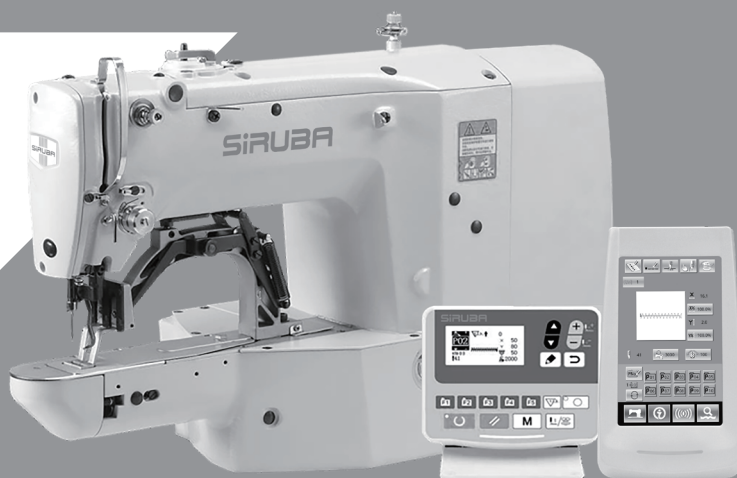


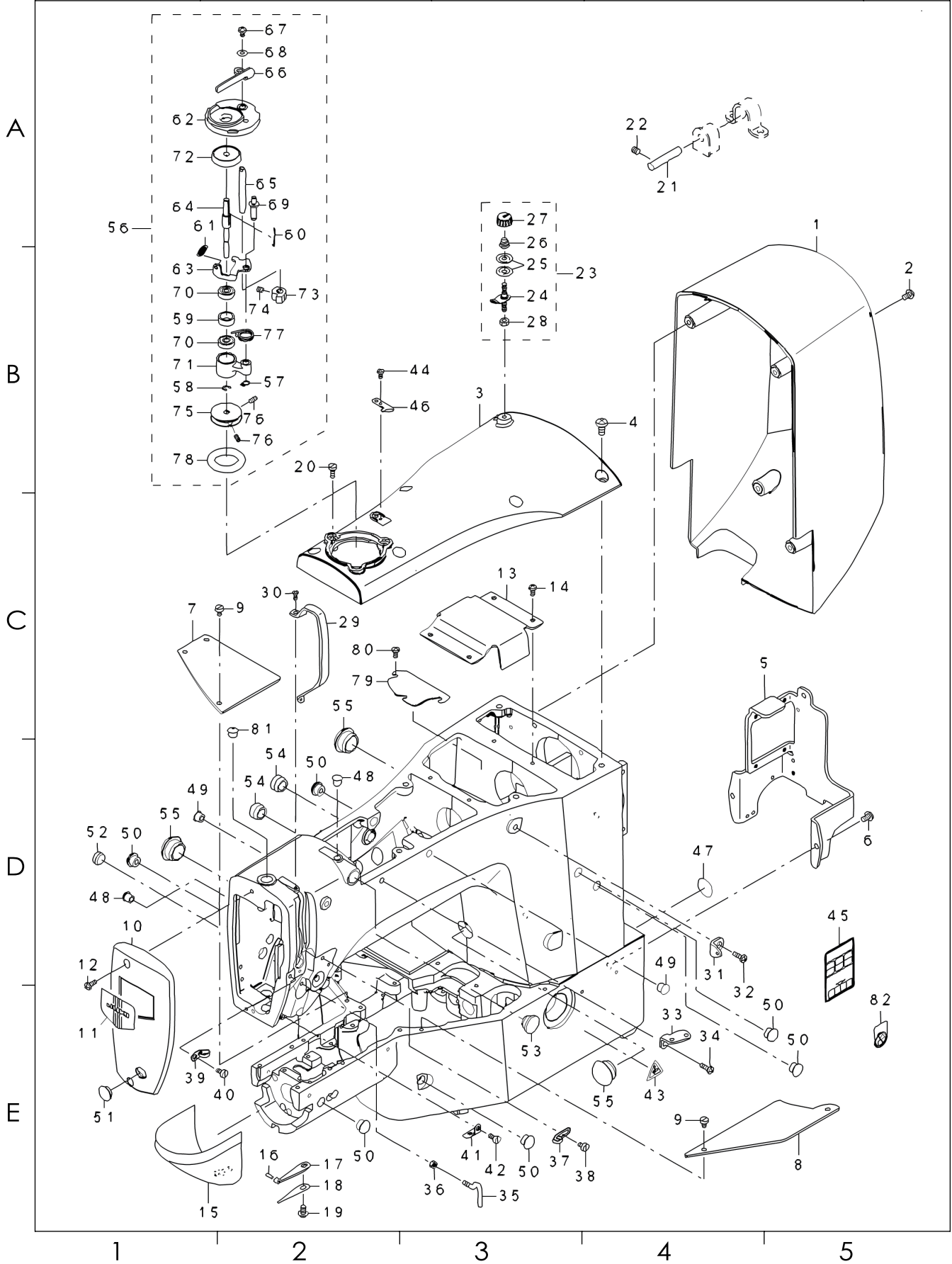
SIRUBA

零件圖

PARTS LIST

■ LKS-1900D Series





| SiRUBA SEQUENCE LIST | | Series | Parts Group | Subclass Remark | Page | |
|----------------------------|----|---------------------|-------------|-----------------|--------------------------------|-----|
| | | LKS-1900D Series | 01 | | 1 / 2 | |
| | | | | | Date | |
| | | | | | 2022/05/31 | |
| 序號 | 件號 | 名稱 | Number | Description | Qty | |
| A | 1 | 01-01-1900ASS | 機頭後蓋 | 400-06475 | MOTOR COVER | 1 |
| | 2 | | 螺釘 M4 L=8 | SM-5040855-SN | SCREW | 4 |
| | 3 | 01-03-1900ASS | 機頭上蓋 | 400-06478 | UPSIDE COVER | 1 |
| | 4 | | 螺釘 M6 L=12 | SM-4061255-SP | SCREW M6 L=12 | 6 |
| | 5 | 01-05-1900ASS | 印製板保護架 | 400-10404 | PROTECTION_PLATE | 1 |
| | 6 | | 螺釘 M4 L=8 | SM-4050855-SP | SCREW | 3 |
| | 7 | 01-07-1900ASS | 左側蓋 | 400-06487 | BED COVER LEFT | 1 |
| | 8 | 01-08-1900ASS | 右側蓋 | 400-06488 | BED COVER RIGHT | 1 |
| | 9 | | 螺釘 M4 L=6 | SM-6040650-TP | SCREW M4 L=6 | 5 |
| | 10 | 01-10-1900ASS | 面蓋 | 400-06481 | FACE COVER | 1 |
| B | 11 | | 商標 | 229-02506 | FACE PLATE | 1 |
| | 12 | | 螺釘 M4 L=10 | SM-4041055-SP | SCREW | 2 |
| | 13 | 01-13-1900ASS | 曲柄桿蓋 | 400-10405 | CRANK_ROD_COVER | 1 |
| | 14 | | 螺釘 M4 L=8 | SM-5040855-SN | SCREW | 4 |
| | 15 | 05-020-185 | 梭床罩 | 138-16855 | CYLINDER ARM CAP | 1 |
| | 16 | 4-22-1900 | 員柱銷 B2×10 | 135-08700 | HOOK COVER PRESSER SPRING PIN | 1 |
| | 17 | 05-021-185 | 彈簧板 A | 135-08809 | HOOK COVER PRESSER SPRING A | 1 |
| | 18 | 05-022-185 | 彈簧板 B | 135-08908 | HOOK COVER PRESSER SPRING B | 1 |
| | 19 | | 螺釘 M4 L=8 | SM-5040855-SN | SCREW | 1 |
| | 20 | | 螺釘 M4 L=11 | SM-6041150-TP | SCREW M4 L=11 | 3 |
| C | 21 | 1-17-1900 | 鉸鏈銷 | B2707-761-000 | HINGE STUD | 2 |
| | 22 | | 螺釘 M6 L=6 | SM-8060612-TP | SCREW M6 L=6 | 4 |
| | 23 | 1-74-1900 | 夾線控制器 1 號組件 | 141-13468 | BOBBIN THREAD TENSION ASM. | 1 |
| | 24 | 11416-780 | 繞線器過線螺釘 | 141-13450 | BOBBIN THREAD TENSION ROD ASM. | (1) |
| | 25 | 11415-780 | 夾線盤 | B3126-012-000 | THREAD TENSION DISK | (2) |
| | 26 | 11414-780 | 壓線彈簧 | D7133-555-B00 | CONNECTING ROD SPRING | (1) |
| | 27 | 11413-780 | 夾線螺帽 | 110-72402 | THREAD TENSION NUT | (1) |
| | 28 | 10211-780 | 螺帽 11/64-40 | NS-6110310-SP | NUT 11/64-40 | (1) |
| | 29 | 01-012-185 | 挑線桿護罩 | 138-16608 | BALANCE COVER | 1 |
| | 30 | 01-009-210 | 螺釘 M3 L=8 | SM-4030855-SN | SCREW M3 L=8.0 | 2 |
| D | 31 | 01-014-1900 | 導線板 | 400-10414 | THREAD_GUIDE_NO.1 | 1 |
| | 32 | 01-011-210 | 螺釘 M6 L=12 | SM-4061255-SP | SCREW M6 L=12 | 1 |
| | 33 | 11537-780 | 過線板 | B1111-232-000 | THREAD GUIDE PLATE | 1 |
| | 34 | 01-011-210 | 螺釘 M6 L=12 | SM-4061255-SP | SCREW M6 L=12 | 1 |
| | 35 | 780-11544-000 | 挑線過線鉤 A | 400-10571 | L_SHAPED_THREAD_GUIDE_A | 1 |
| | 36 | 780-10406-SP | 螺帽 M4 | NM-6040000-SN | NUTM4 | 1 |
| | 37 | 11542-780 | 右線鉤 | 229-20508 | ARM THREAD GUIDE A | 1 |
| | 38 | 01-017-210 | 螺釘 M4 L=6 | SM-6040650-TP | SCREW M4 L=6 | 1 |
| | 39 | 01-021-210 | 左線鉤 | 137-05108 | TAKE-UP THREAD GUIDE B | 1 |
| | 40 | 01-017-210 | 螺釘 M4 L=8 | SM-6040860-TP | SCREW M4 L=8 | 1 |
| E | 41 | 01-019-210 | 過線板 | B1129-210-000 | FRAME THREAD GUIDE (B) | 1 |
| | 42 | 01-017-210 | 螺釘 M4 L=8 | SM-6040860-TP | SCREW M4 L=8 | 1 |
| | 43 | | 小心標籤 | CM-3002000-02 | CAUTION LABEL(25) | 1 |
| | 44 | | 螺釘 M3 L=6 | SM-4030601-SN | SCREW M3 X 6 | 1 |
| | 45 | | 安全標籤 | CM-3012000-01 | SAFETY LABEL_S | 1 |
| | 46 | 01-047-1900 | 斷線刀片 | 105-02300 | THREAD CUTTER | 1 |
| | 47 | | 接地標牌 | 100-04109 | GROUND MARK | 1 |
| | 48 | | 橡膠堵 | TA-0750704-R0 | RUBBER PLUG | 2 |
| | 49 | | 橡膠堵 | TA-0850604-R0 | RUBBER PLUG | 2 |
| | 50 | | 橡膠堵 | TA-1050504-R0 | RUBBER PLUG | 6 |
| | 51 | | 橡膠堵 | TA-1250406-R0 | RUBBER PLUG D=12.5 L=4 | 1 |
| | 52 | | 橡膠堵 | TA-1270502-R0 | RUBBER PLUG | 1 |
| | 53 | | 橡膠堵 | TA-1470704-R0 | RUBBER PLUG | 1 |

| | | | | |
|-----------------------------------|----------------------------|-------------|-----------------|------------|
| SIRUBA SEQUENCE LIST | Series | Parts Group | Subclass Remark | Page |
| | LKS-1900D Series | 01 | | 2 / 2 |
| | | | | Date |
| | | | | 2022/05/31 |

| | | | | | |
|---|----|-----------|---------------|--------------------------------|-----|
| A | 54 | 橡膠堵 | TA-1550902-R0 | PLUG | 2 |
| | 55 | 橡膠堵 | TA-2100904-R0 | RUBBER PLUG | 3 |
| | 56 | | 262-60000 | BOBBIN WINDER UNIT | 1 |
| | 57 | 繞線器組件 | RC-0560711-KP | RETAINING RING | (1) |
| | 58 | | RE-0400000-K0 | E-RING 4 | (1) |
| | 59 | | 262-60802 | BTW BEARING SPACER | (1) |
| | 60 | | 262-61602 | BOBBIN SPRING | (1) |
| | 61 | | 262-61701 | BTW SPRING | (1) |
| | 62 | | 262-60109 | BTW BASE | (1) |
| | 63 | | 262-60208 | BTW CAM PLATE | (1) |
| B | 64 | | 262-60901 | BTW SHAFT | (1) |
| | 65 | | 262-61008 | BTW LEVER SHAFT | (1) |
| | 66 | | 262-61107 | BTW LEVER | (1) |
| | 67 | | SM-5040655-SN | SCREW | (1) |
| | 68 | | WP-0450826-SC | WASHER 4.5X10X0.8 | (1) |
| | 69 | | 262-60307 | BTW BASE SHAFT | (1) |
| | 70 | | 262-61305 | BTW BEARING | (2) |
| | 71 | | 262-60406 | BTW SHAFT BASE | (1) |
| | 72 | | 262-61206 | BTW SPACER | (1) |
| | 73 | | 262-60505 | BTW CAM LEVER | (1) |
| | 74 | | SM-8050502-TP | SCREW M5 L=5 | (1) |
| | 75 | | 262-60604 | BTW WHEEL | (1) |
| | 76 | | SM-8040802-TP | SCREW M4X8 | (2) |
| | 77 | | 262-60703 | BTW TORSION SPRING | (1) |
| | 78 | | 262-61503 | BTW WHEEL RUBBER | (1) |
| C | 79 | 曲柄桿防護板 | 400-11928 | CRANK ROD UNDER COVER | 1 |
| | 80 | 螺釘 M4 L=8 | SM-5040855-SN | SCREW | 3 |
| | 81 | 橡膠堵 | 229-01409 | NEEDLE BAR UPPER BUSH CAP | 1 |
| | 82 | 禁止注油標籤 | CM-1001000-01 | OIL INJECTION PROHIBITION LABE | 1 |

| | | | | | |
|---|--|--|--|--|--|
| D | | | | | |
|---|--|--|--|--|--|

| | | | | | |
|---|--|--|--|--|--|
| E | | | | | |
|---|--|--|--|--|--|

SIRUBA

PARTS LIST

Series

**LKS-1900D
Series**

Parts Group

02

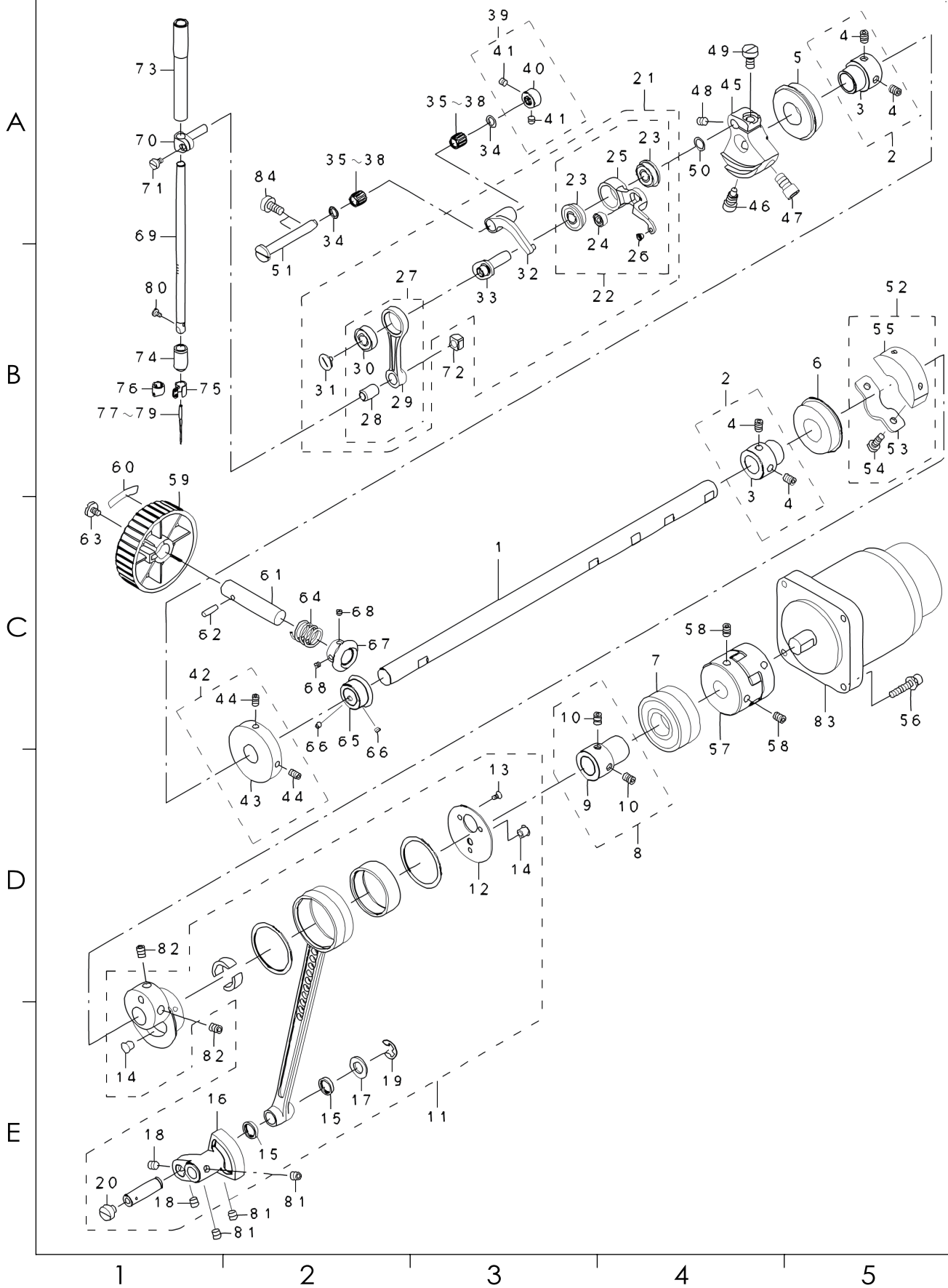
Subclass Remark

Page

1 / 1

Date

2022/05/31



| SIRUBA SEQUENCE LIST | | Series | | Parts Group | Subclass Remark | Page |
|----------------------------|----|---------------------|-------------------------|---------------|----------------------------|------------|
| | | LKS-1900D Series | | 02 | | 1 / 2 |
| | | | | | | Date |
| | | | | | | 2022/05/31 |
| 序號 | 件號 | 名稱 | Number | Description | Qty | |
| | 1 | 02-01-1900ASS | 上軸 | 400-10572 | MAIN SHAFT | 1 |
| | 2 | 04-005-210 | 上軸前(中)軸承定位套組件 | 400-10415 | BEARING_BUSH_A_ASM. | 2 |
| | 3 | 04-005-210 | 上軸前(中)軸承定位套 | 400-10416 | BEARING_BUSH_A | (2) |
| | 4 | 04-005.1-210 | 無頭內六角螺釘 M6 L=8 | SM-8060812-TP | SCREW M6 L=8 | (4) |
| A | 5 | 04-004-210 | 帶邊球軸承 Φ20× Φ42×12 | SB-1200018-00 | BEARING | 1 |
| | 6 | 04-004-210 | 帶邊球軸承 Φ20× Φ42×12 | SB-1200018-00 | BEARING | 1 |
| | 7 | 04-006-210 | 球軸承 Φ20×Φ47×21 | SB-1200017-00 | BEARING | 1 |
| | 8 | 04-007-210 | 上軸後軸承定位套組住 | 400-10418 | BEARING_BUSH_B_ASM. | 1 |
| | 9 | 04-007-210 | 上軸後軸承定位套 | 400-10419 | BEARING_BUSH_B | (1) |
| | 10 | 04-007.1-210 | 無頭內六角螺釘 M6 L=8 | SM-8060812-TP | SCREW M6 L=8 | (2) |
| | 11 | 04-016-210 | 大連桿 | 400-31136 | CRANK_ROD_ALL_ASM. | 1 |
| | 12 | 04-020-210 | 輪蓋板 | 400-10421 | CRANK_ROD_SUPPORT_PLATE | (1) |
| | 13 | 04-021-210 | 十字槽沉頭螺釘 M3 L=6 | SM-1030601-SP | SCREW M3 L=6 | (3) |
| B | 14 | 04-019-210 | 橡膠塞 D=6.5 L=6 | TA-0670604-R0 | PLUG D=6.7 L=6 | (2) |
| | 15 | 04-022-210 | 骨架油封 Φ10×Φ14×2.6 | 101-08009 | OIL SEAL | (2) |
| | 16 | 04-023-210 | 擺動齒輪 | 400-06561 | OSCILLATOR | (1) |
| | 17 | 04-024-210 | 墊片 | 400-26818 | WASHER | (1) |
| | 18 | 04-026-210 | 無頭內六角螺釘 M6 ×0.75 L=6 | SM-8480652-TP | SCREW | (2) |
| | 19 | 04-025-210 | 開口擋圈 8 | RE-0800000-K0 | E-SHAPED SNAP RING (8MM) | (1) |
| | 20 | 04-027-210 | 螺釘 M6 L=4.5 | SM-6060550-TP | SCREW M6 L=4.5 | (1) |
| | 21 | 04-064-210 | 挑線組件 | 400-06529 | THREAD TAKE UP COMPL. | 1 |
| | 22 | 04-065-210 | 挑線桿組件 | 400-06530 | THREAD TAKE UP LEVER ASM. | (1) |
| | 23 | 04-068-210 | 帶邊球軸承 Φ8×Φ19×6 | SB-1080022-00 | BEARING | (2) |
| C | 24 | 04-069-210 | 球軸承 Φ4×411×4 | SB-1040016-00 | BEARING | (1) |
| | 25 | 04-066-210 | 挑線桿 | 400-06531 | THREAD TAKE UP LEVER | (1) |
| | 26 | 04-067-210 | 挑線桿孔套 | B1908-505-000 | THREAD PASS BUSH | (1) |
| | 27 | 04-070-210 | 針桿曲柄連桿組件 | 400-06534 | NEEDLE BAR CRANK ROD ASM. | (1) |
| | 28 | 04-073-210 | 銅套 | 228-91006 | NEEDLE BAR CRANK ROD METAL | (1) |
| | 29 | 04-071-210 | 針桿曲連桿 | 400-06535 | NEEDLE BAR CRANK ROD | (1) |
| | 30 | 04-072-210 | 帶邊球軸承 Φ8×Φ19×6 | SB-1080023-00 | BEARING | (1) |
| | 31 | 04-076-210 | 左旋螺釘 | B1903-552-000 | LEFT SCREW | (1) |
| | 32 | 04-074-210 | 挑線桿曲柄 | 400-06532 | THREAD TAKE UP CRANK | (1) |
| | 33 | 04-075-210 | 針桿曲柄 | 400-06537 | NEEDLE ROD CRANK | (1) |
| | 34 | 04-028-210 | 尼龍墊圈 | 228-91204 | BEARING SUPPORT | 2 |
| D | 35 | 04-029-210 | 滾針軸承 Φ7×Φ10×9.6 | SB-3070002-0A | BEARING | 2 |
| | 36 | 04-030-210 | | SB-3070002-0B | BEARING | 2 |
| | 37 | 04-031-210 | | SB-3070002-0C | BEARING | 2 |
| | 38 | 04-032-210 | | SB-3070002-0D | BEARING | 2 |
| | 39 | 04-033-210 | 擋圈組件 | 400-10434 | THRUST_COLLAR_ASM. | 1 |
| | 40 | 04-033.1-210 | 擋圈 | 400-10435 | THRUST_COLLAR | (1) |
| | 41 | 04-033.2-210 | 無頭內六角螺釘 M5 L=4 | 400-10436 | THRUST_COLLAR_SCREW | (2) |
| | 42 | 04-054-210 | 摩擦輪組件 | 400-10533 | BTW_DRIVING_WHEEL_ASM. | 1 |
| | 43 | 04-054.1-210 | 摩擦輪 | 400-10534 | BTW_DRIVING_WHEEL | (1) |
| | 44 | 04-054.2-210 | 無頭內六角螺釘 M5 L=8 | 400-10533 | BTW_DRIVING_WHEEL_ASM. | (2) |
| | 45 | 04-010-210 | 針桿曲棧 | 400-10423 | COUNTER_WEIGHT | 1 |
| E | 46 | 04-011-210 | 針桿曲柄定位螺釘 | 400-06517 | COUNTER_WEIGHT_SCREW_A | 1 |
| | 47 | 04-012-210 | 螺釘 | SM-6081252-TP | BOLT M8 L=12 | 1 |
| | 48 | 04-013-210 | 無頭內六角螺釘 M6×0.75 L=6 | SM-8480652-TP | SCREW M6X0.75 L=6 | 1 |
| | 49 | 04-014-210 | 一字平面圓柱頭螺釘 M6 L=12 | SM-6061200-SP | SCREW | 1 |

1

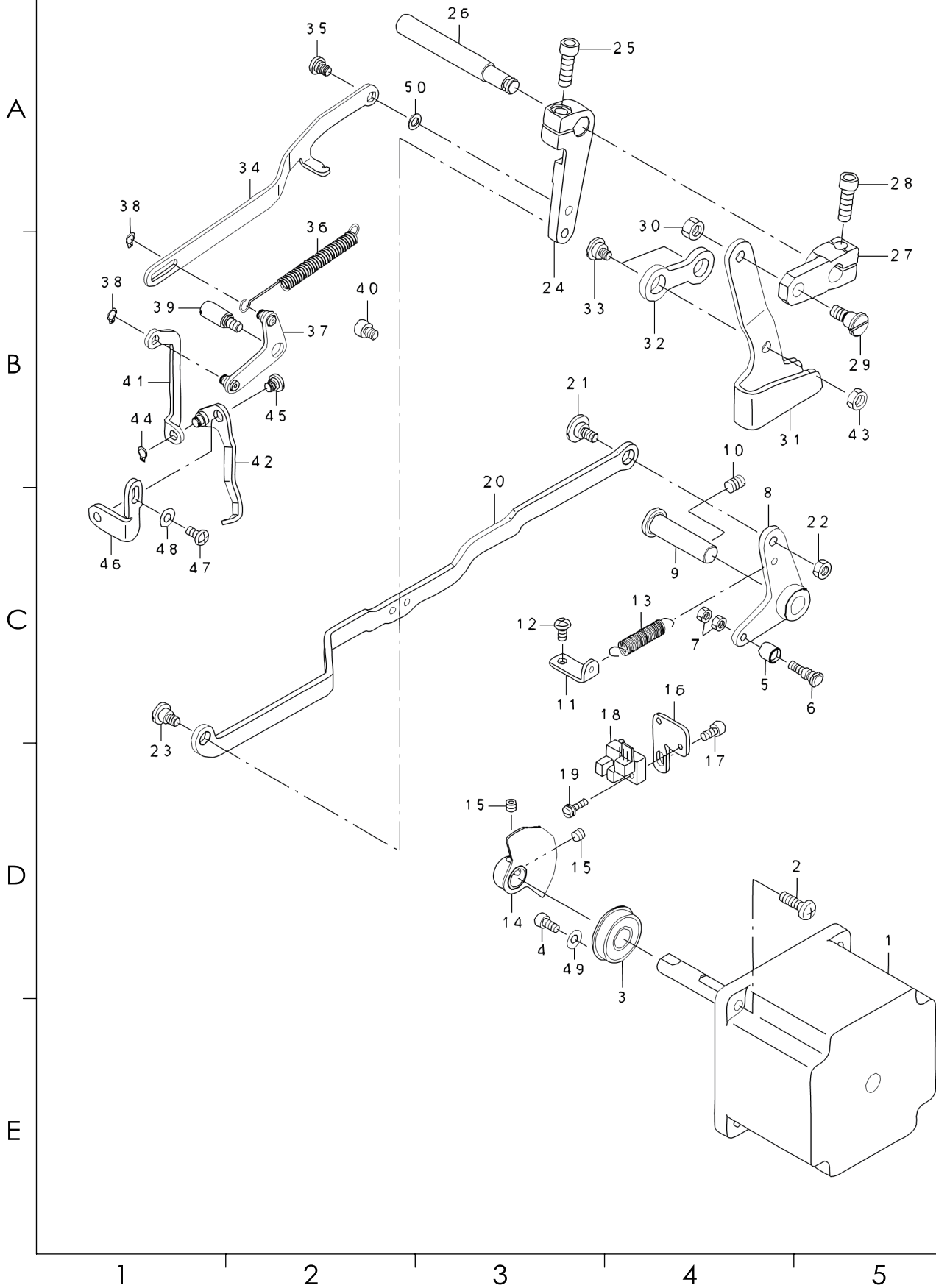
2

3

4

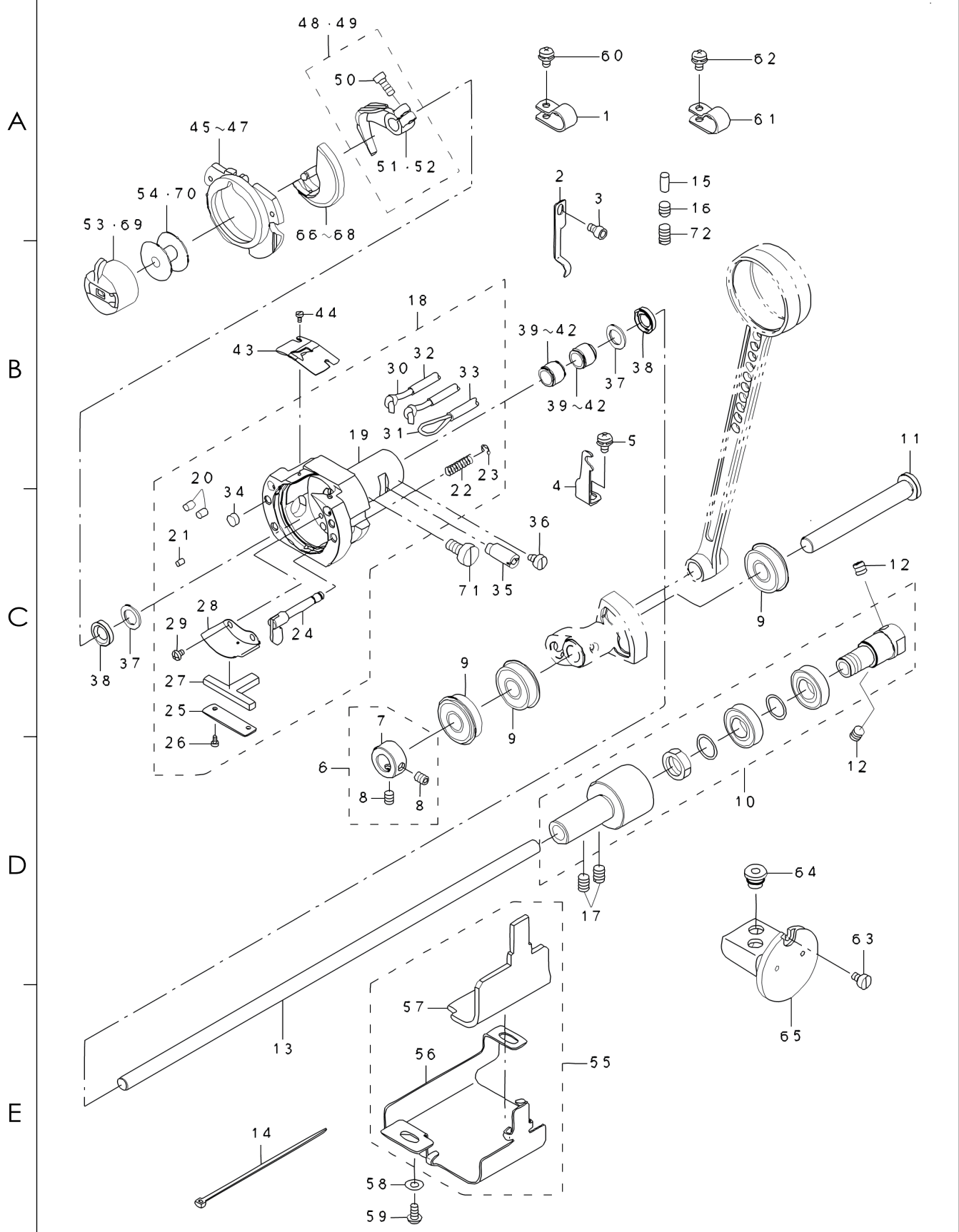
5

| SiRUBA SEQUENCE LIST | | Series | Parts Group | Subclass Remark | Page | |
|----------------------------|----|---------------------|----------------------|-----------------|------------------------------------|-----|
| | | LKS-1900D Series | 02 | | 2 / 2 | |
| | | | | | Date | |
| | | | | | 2022/05/31 | |
| A | 50 | 10317-780 | 止推墊圈 | WP-0820516-SP | WASHER 11.6X8.2X0.6 | 1 |
| | 51 | 04-077-210 | 銷軸 | 400-11902 | THREAD TAKE UP CRANK SHAFT | 1 |
| | 52 | 04-036-210 | 配重塊組件 | 400-10437 | CRANK_BALANCER_ASM. | 1 |
| | 53 | 04-038-210 | 配重壓板 | 400-10439 | CRANK_BALANCER_FIX_PLATE | (1) |
| | 54 | 04-039-210 | 一字平面圓柱頭螺釘 M5 L=14 | 400-10440 | CRANK_BALANCER_FIX_PLATE_ SCREW | (2) |
| | 55 | 04-037-210 | 配重塊 | 400-28015 | AC SERVO MOTOR | (1) |
| | 56 | 04-041-210 | 內六角組合螺釘 M5 L=25 | SL-6052592-TN | BOLT | 4 |
| | 57 | 04-042-210 | 三爪聯軸器組件 | 236-04309 | COUPLING | 1 |
| | 58 | 04-043-210 | 無頭內六角螺釘 M6 L=8 | SM-8060812-TP | SCREW M6 L=8 | 4 |
| | 59 | 02-049-1900 | 手輪 | B1212-210-D00 | PULLEY | 1 |
| B | 60 | 02-045-210 | 旋向標籤 | B1144-210-000 | REVOLVING DIRECTION LABEL | 1 |
| | 61 | 02-006-1900 | 手輪軸 | 265-00306 | HAND PULLEY SHAFT | 1 |
| | 62 | GB/T879 | 彈性圓柱銷 4×14 | PS-0400142-KH | SPRING PIN 4X14 | 1 |
| | 63 | 02-047-1900 | 手輪固定螺釘 | A1230-500-00A | SET-SCREW | 1 |
| | 64 | 02-050-1900 | 彈簧 | GAF-01007000 | SPRING | 1 |
| | 65 | 04-050-210 | 手動全齒輪 (A) | 400-06515 | GEAR A | 1 |
| | 66 | 04-051-210 | 無頭內六角螺釘 M4 L=3 | SM-8040310-SS | SCREW M4 L=3 | 2 |
| | 67 | 02-008-1900 | 手動傘齒輪 (B) | 400-06516 | GEAR B | 1 |
| | 68 | 02-053-1900 | 螺釘 11/64" -40 L=28 | SM-8040310-SS | SCREW M4 L=3 | 2 |
| | 69 | 02-69-1900ASS | 針桿 | 400-10573 | NEEDLE BAR | 1 |
| C | 70 | 03-007-185 | 針杆連接軸 | B1411-552-000 | NEEDLE BAR CLAMP | 1 |
| | 71 | 11424-780 | 螺釘 9/64-40 L=6 | SS-6090670-TP | SCREW9/64-40 L=6 | 1 |
| | 72 | 10601-780 | 針桿架傳動滑塊 | B1414-555-000 | SLIDE BLOCK | 1 |
| | 73 | 04-055-210 | 針桿上套 | 400-10441 | NEEDLE ROD METAL | 1 |
| | 74 | 04-056-210 | 針桿下套 | 400-10442 | NEEDLE ROD LOWER METAL | 1 |
| | 75 | | 針桿導線架 | 400-10574 | THREAD_GUIDE | 1 |
| | 76 | | | D1405-L7A-M00 | NEEDLE BAR THREAD GUIDE | 1 |
| | 77 | | 機針 | MDP-500B1100 | NEEDLE DPX5 #11 | 1 |
| | 78 | | | MDP-500B1400 | NEEDLE DPX5 #14 | 1 |
| | 79 | | | MDP-170B2100 | NEEDLE DPX17 #21 | 1 |
| D | 80 | 04-063-210 | 螺釘 M3 L=4.5 | SM-7030550-TP | SCREW M3 L=4.5 | 1 |
| | 81 | 04-035-210 | 無頭內六角螺釘 M6×0.75 L=6 | SM-8480652-TP | SCREW M6X0.75 L=6 | 3 |
| | 82 | 04-034-210 | 無頭內六角螺釘螺釘 M6 L=8 | SM-8060812-TP | SCREW M6 L=8 | 2 |
| | 83 | | 伺服電機 | 400-28015 | AC SERVO MOTOR | 1 |
| | 84 | 04-078-210 | 開頭內六角螺針 M6 L=19 | SM-6061250-TP | SCREW M6 L=12 | 2 |
| | 84 | | | | | |
| E | | | | | | |



| SiRUBA SEQUENCE LIST | | Series | | Parts Group | Subclass Remark | Page |
|----------------------------|---------------|---------------------|---------------|-----------------------------|-----------------|------------|
| | | LKS-1900D Series | | 03 | | 1 / 1 |
| | | | | | | Date |
| | | | | | | 2022/05/31 |
| 序號 | 件號 | 名稱 | Number | Description | Qty | |
| | | 抬壓腳控制馬達 | 400-29903 | PRESSER LIFTING MOTOR | 1 | |
| | | 螺釘 M5 L=16 | SM-4051655-SP | SCREW M5 L=16 | 4 | |
| | 07-047-210 | 帶邊球軸承 Φ10×Φ26×8 | SB-1100024-00 | BEARING | 1 | |
| | | 螺釘 M4 L=8 | SM-6040802-TP | SCREW M4X0.7 L=8 | 1 | |
| A | 11-004-210 | 凸輪滾子 | 235-17501 | NEEDLE CAM ROLLER A | 1 | |
| | 11-008-210 | 滾輪軸 | 400-40256 | CAM ROLLER SHAFT | 1 | |
| | | 螺帽 M4 | NM-6040001-SP | NUT M4X0.7 | 2 | |
| | 03-08-1900ASS | 壓腳控制連桿 A 組件 | 400-06661 | LIFTER LINK A ASM. | 1 | |
| | 03-09-1900ASS | 銷軸 | 400-06716 | THREAD TRIMMER SHAFT | 1 | |
| | | 無頭內六角螺釘 M6 L=8 | SM-8060812-TP | SCREW M6 L=8 | 1 | |
| | 03-11-1900ASS | 掛彈笛架 | 400-23831 | SPRING_RACK | 1 | |
| | | 螺釘 M4 L=8 | SM-4040855-SP | SCREW | 1 | |
| | 07-035-210 | 拉簧 | 135-15606 | SPRING | 1 | |
| | 07-045-210 | 感應器組件 | 400-06666 | SENSOR SLIT ASM. | 1 | |
| | 07-046-210 | 無頭內六角螺釘 M5 L=4 | SM-8050402-TP | SCREW | 2 | |
| B | 03-16-1900ASS | 感應器安裝板 | 400-10443 | SENSOR_INSTALLING_BASE | 1 | |
| | | 內六角圓柱頭螺釘 M4 L=8 | SM-6040802-TP | SCREW M4X0.7 L=8 | 1 | |
| | | 感應器 | HD-0005700-0A | PHOTO SENSOR | 1 | |
| | | 螺釘 M3 L=12 | SL-4031291-SC | SCREW M3X12 | 1 | |
| | 03-20-1900ASS | 壓腳控制連桿 B | 400-06665 | LIFTER LINK B | 1 | |
| | 11-011-210 | 軸位螺釘 D=8 H=3.3 | SD-0800327-TP | HINGE SCREW D=8 H=3.2 | 1 | |
| | | 螺母 M5 | NM-6050001-SP | NUT M5 | 1 | |
| | 03-23-1900ASS | 軸位螺釘 | SD-0700406-TP | HINGE SCREW D=7 H=4 | 1 | |
| | 03-020-1900 | 連接臂 | 400-06671 | CONNECTING ARM | 1 | |
| | | 內六角圓柱頭螺釘 M6 L=18 | SM-6061802-TP | SCREW M6 L=18 | 1 | |
| | 03-005-1900 | 連接臂軸 | 265-00405 | CONNECTING SHAFT | 1 | |
| C | 03-27-1900ASS | 壓腳連接臂 | 400-08693 | LOWERING ARM | 1 | |
| | | 內六角圓柱頭螺釘 M6 L=18 | SM-6061802-TP | SCREW M6 L=18 | 1 | |
| | 03-29-1900ASS | 軸位螺釘 | SD-0790606-TP | HINGE SCREW D=7.94 H=6 | 1 | |
| | | 螺帽 M6 | NM-6060001-CP | NUT M6 | 1 | |
| | 03-31-1900ASS | 拾壓腳壓桿 | 400-06672 | LOWERING FOOT | 1 | |
| | 03-004-1900 | 拾壓腳連桿 | 141-04400 | CONNECTING LINK | 1 | |
| | 03-33-1900ASS | 軸位螺釘 | SD-1000406-TP | HINGE SCREW D=10 H=4 | 2 | |
| | 03-34-1900ASS | 拔線調節桿 | 400-06674 | WIPER CONNECTING LINK | 1 | |
| | 03-35-1900ASS | 軸位螺釘 | SD-0600206-TP | HINGE SCREW D=6 H=2 | 1 | |
| | 04-025-185 | 拔線槓桿拉簧 | 135-09708 | SPRING | 1 | |
| | 03-37-1900ASS | 拔線槓桿組件 | 400-10451 | WIPER_CONNECTING_ARM_ASM | 1 | |
| D | 5-11-1900 | 軸用彈性擋圈 5 | RC-0470611-KP | RETAINING RING 4.7 | 2 | |
| | 03-39-1900ASS | 拔線拉桿定位螺釘 | 400-10455 | WIPER_CONNECTING_LINK_SHAFT | 1 | |
| | | | 400-10457 | WIPER_STOPPER | 1 | |
| | 03-41-1900ASS | 拔線拉桿 | 400-10458 | WIPER_CONNECTING_PLATE | 1 | |
| | 5-7-1900 | 拔線桿 | 400-17202 | WIPER C ASM. | 1 | |
| | | 螺母 M6 | NM-6060003-SC | NUT M6 | 1 | |
| | 5-11-1900 | 軸用擋圈 5 | RC-0470611-KP | RETAINING RING 4.7 | 1 | |
| | 4-56-185 | 軸位螺釘 D=6.35 H=2.1 | SD-0640216-TP | HINGE SCREW D=6.35 H=2.1 | 1 | |
| | 5-9-1900 | 拔線拉桿定位架 | 400-06678 | WIPER_BASE_PLATE | 1 | |
| | | 螺釘 M4 L=8 | SM-4040855-SP | SCREW | 1 | |
| | | 墊圈 4 | WP-0450801-SP | WASHER | 1 | |
| E | | 墊圈 4 | WP-0450801-SP | WASHER | 1 | |
| | | 墊圈 4 | WP-0480856-SP | WASHER 4.8X8.4X0.8 | 1 | |

| | | | | |
|-----------------------------|----------------------------|-------------|-----------------|------------|
| SIRUBA PARTS LIST | Series | Parts Group | Subclass Remark | Page |
| | LKS-1900D Series | 04 | | 1 / 1 |
| | | | | Date |
| | | | | 2022/05/31 |



1 2 3 4 5

| SiRUBA SEQUENCE LIST | | Series | | Parts Group | Subclass Remark | Page |
|----------------------------|---------------|---------------------|---------------|-------------------------------|-----------------|------------|
| | | LKS-1900D Series | | 04 | | 1 / 1 |
| | | | | | | Date |
| | | | | | | 2022/05/31 |
| 序號 | 件號 | 名稱 | Number | Description | Qty | |
| | | 電線夾 | HX-0015000-0D | CABLE CLIP | 1 | |
| | 04-02-1900ASS | 油繩管夾 | 400-12127 | OIL_PIPE HOLDER | 1 | |
| | | 內六角圓柱頭螺釘 W4 L=6 | SM-6040602-TP | SCREW M4 L=6 | 1 | |
| | 04-04-1900ASS | 油繩管夾 | 400-13721 | TUBE_CLAMP | 1 | |
| | | 螺釘 M4 L=8 | SL-4040891-SC | SCREW M4 L=8 | 1 | |
| A | 04-044-1900 | 擋圈組件 | 400-10464 | THRUST_COLLAR_ASM. | 1 | |
| | 04-044-1900 | 擋圈 | 400-10467 | THRUST_COLLAR | (1) | |
| | 5-27-185 | 螺釘 M5 L=6 | 400-10469 | THRUST_COLLAR_SCREW | (2) | |
| | 08-003-210 | 帶邊球軸承 Φ10×Φ26×8 | SB-1100024-00 | BEARING | 3 | |
| | 08-(5-10)-210 | 下軸偏心套組件 | 400-16077 | LOWER_SHAFT_GEAR_ASM. | 1 | |
| | 04-11-1900ASS | 擺動齒輪軸 | 400-06563 | OSCILLATOR_SHAFT | 1 | |
| | 08-006-210 | 無頭內六角螺釘 M6 L=6 | SM-8060612-TP | SCREW M6 L=6 | 2 | |
| | 04-13-1900ASS | 下軸 | 400-10575 | LOWER_SHAFT | 1 | |
| | 08-044-210 | 尼龍紮頭 3×80 | EA-9500B01-00 | CABLE_BAND | 2 | |
| | 08-045-210 | 油繩調節柱塞 | 400-06578 | OIL_WICK_PRESSER | 1 | |
| | 08-046-210 | 無頭內六角螺釘 M6 L=6 | SM-8060610-TP | SCREW | 1 | |
| | 08-011-210 | 無頭內六角螺釘 M6 L=8 | SM-8060812-TP | SCREW M6 L=8 | 2 | |
| B | | 梭床組件 | 400-06573 | SHUTTLE_ASM. | 1 | |
| | 08-013-210 | 梭床體 | 400-06574 | SHUTTLE | (1) | |
| | 04-010-1900 | 油毛氈塞 A | B1820-210-D00 | SHUTTLE_OIL_FELT.A | (2) | |
| | 04-012-1900 | 油毛氈塞 B | B1821-210-D00 | SHUTTLE_OIL_FELT.B | (1) | |
| | 05-005.4-185 | 壓簧 | B1822-215-P00 | INNER_HOOK_PRESSER_SPRING | (2) | |
| | 08-017-210 | 開口擋圈 3 | RE-0300000-K0 | E-RING 3 | (2) | |
| | 05-005.1-185 | 梭床蓋扳手 | 265-01858 | INNER-HOOK-PRESSER_ASM. | (2) | |
| | 05-005.5-185 | 油氈壓板 | 141-04004 | ONCE_THROUGH_OIL_FELT_PRESSER | (1) | |
| | 05-12-185 | 螺釘 3/32-56 L=3.5 | SM-6020460-TP | SCREW M2 L=3.5 | (2) | |
| | 05-005.6-185 | 油氈 | 141-03907 | SHUTTLE_ONCE_THROUGH_OIL_FELT | (1) | |
| | 08-022-210 | 梭床氈壓板 | 400-06577 | SHUTTLE_LUBRICATING_PLATE | (1) | |
| | 10-45-185 | 螺釘 9/64-40 1=4 | SM-4030455-SP | SCREW | (2) | |
| C | 08-024-210 | 油線 Φ2 | CQ-2000000-00 | OIL_WICK | (2.6) | |
| | 08-024-210 | 油線 Φ2 | CQ-2000000-00 | OIL_WICK | (1.4) | |
| | | 乙烯基管 | 236-30007 | TUBE | (1) | |
| | | 乙烯基管 | 236-30007 | TUBE | (0.6) | |
| | 10-035-185 | 橡膠塞 | 135-29607 | SHUTTLE_PACKING | (2) | |
| | 08-028-210 | 梭床調節軸 | 400-10471 | SHUTTLE_RACE_ADJUSTING_SHAFT | 1 | |
| | 08-029-210 | 一字平面圓柱頭螺釘 M4 1=6 | SM-6040650-TP | SCREW M4 L=6 | 1 | |
| | | 墊圈 | 400-06575 | SHUTTLE_BEARING_RING | 2 | |
| | 08-031-210 | 骨架油封 Φ8×Φ15×3 | 400-06576 | SHUTTLE_OIL_SEAL | 2 | |
| | 08-033-210 | 滾針軸承 Φ8×Φ12×9.5 | SB-3080010-0A | BEARING | 2 | |
| | 04-43-1900ASS | 梭床分線板 | B1815-210-000 | INNER_HOOK_UPPER_SPRING | 1 | |
| | 05-12-185 | 螺釘 3/32-56 1=3.5 | SM-6020460-TP | SCREW M2 L=3.5 | 2 | |
| | 05-001.1-185 | 梭床蓋 | 141-03253 | INNER_HOOK_PRESSER_ASM..A | 1 | |
| D | 05-003-185 | 擺梭托 | 400-14963 | SHUTTLE_DRIVER_ASM. | 1 | |
| | 05-06-185 | 螺釘 3/16-28 1=12.0 | SS-6121212-TP | SCREW 3/16-28 L=12.0 | (1) | |
| | 05-003-185 | 擺梭托 | 400-11511 | SHUTTLE_DRIVER | (1) | |
| | 4-42-185 | 梭殼組件 | B1828-980-0BB | BOBBIN_CASE_ASM.(RACING_PREVE | 1 | |
| | 05-002-185 | 梭芯 | 138-12102 | BOBBIN | 1 | |
| | 04-55-1900ASS | 擺動齒輪油氈盒組件 | 400-10473 | LOWER_SHAFT_GEAR_COVER_ASM. | 1 | |
| | 04-56-1900ASS | 擺動齒輪油氈盒 | 400-10474 | LOWER_SHAFT_GEAR_COVER | (1) | |
| | 04-57-1900ASS | 擺動齒輪油氈 | 400-10475 | LOWER_SHAFT_GEAR_FELT | (1) | |
| | | 墊圈 4 | WP-0450801-SP | WASHER | 2 | |
| | | 螺釘 M4 L=8 | SM-5040855-SN | SCREW | 2 | |
| | | 螺釘 M4 L=8 | SL-4040891-SC | SCREW M4 L=8 | 1 | |
| | | 電線夾 | HX-0015000-0B | CABLE_CLIP | 2 | |
| | | 螺釘 M4 L=8 | SL-4040891-SC | SCREW M4 L=8 | 2 | |
| E | 03-061-210 | 一字平面圓柱頭螺釘 M4 L=6 | SM-6040650-TP | SCREW M4 L=6 | 1 | |
| | 03-062-210 | 橡膠套 | 400-06840 | RUBBER_BUSH | 2 | |
| | 03-060-210 | 油窗組件 | 400-06836 | OIL_TANK_ASM. | 1 | |
| | 5-4-185 | 擺梭 | 400-14965 | SHUTTLE(H) | 1 | |
| | 08-027-210 | 一字平面圓柱頭螺釘 M6 L=12 | 400-10470 | SHUTTLE_ASM_SCREW | 1 | |
| | 08-050-210 | 無頭內六角螺釘 M6 L=10 | SM-8061050-TP | SCREW | 1 | |

1

2

3

4

5

| | | | | |
|-----------------------------|-----------------------------|-------------|-----------------|------------|
| SIRUBA PARTS LIST | Series | Parts Group | Subclass Remark | Page |
| | LKS-1900D Series | 05 | | 1 / 1 |
| | | | | Date |
| | | | | 2022/05/31 |

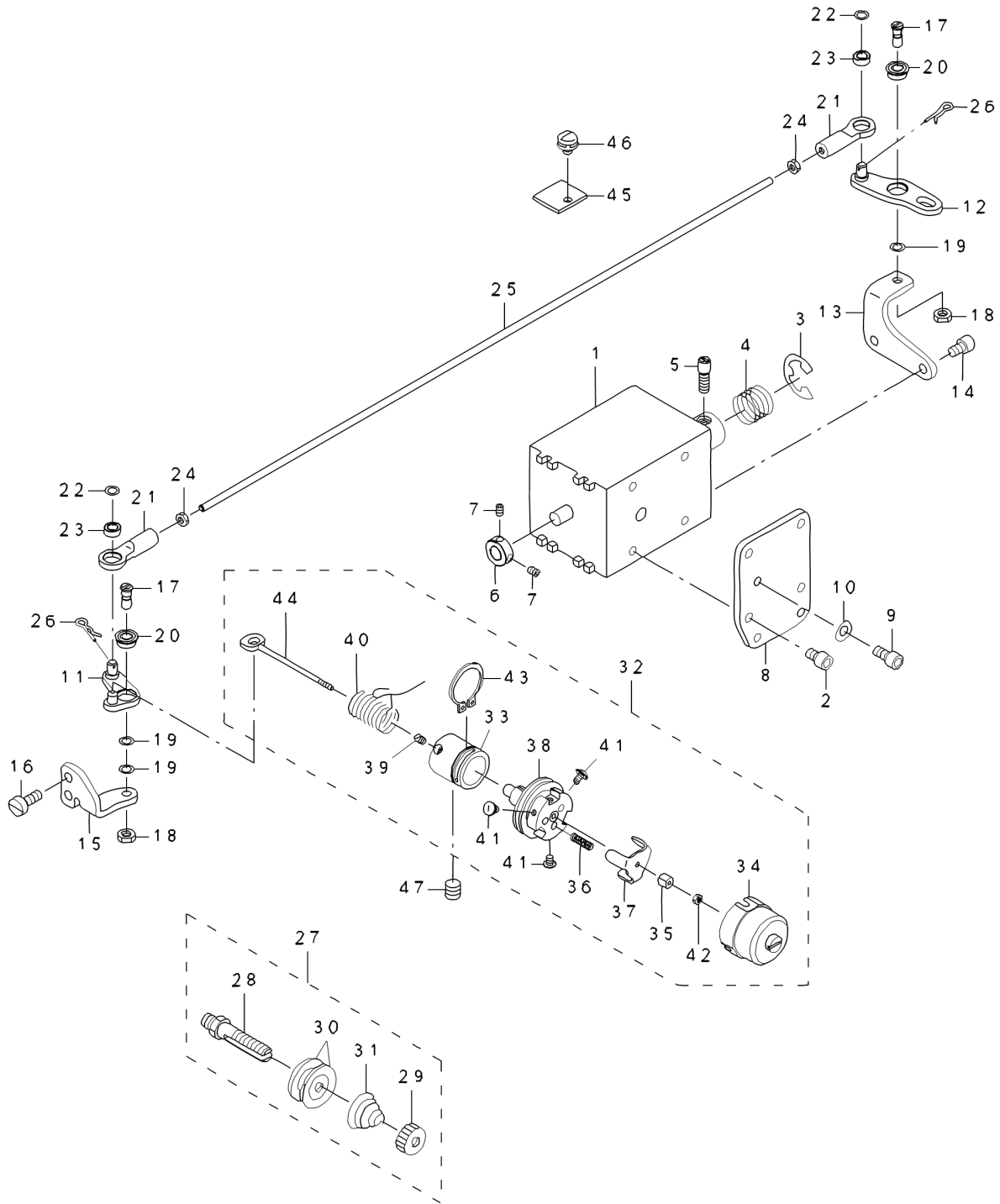
A

B

C

D

E



1

2

3

4

5

| SiRUBA SEQUENCE LIST | | Series | | Parts Group | Subclass Remark | Page |
|----------------------------|----|------------------------------|---------------|-----------------------------|-----------------|------------|
| | | LKS-1900D Series | | 05 | | 1 / 1 |
| | | | | | | Date |
| | | | | | | 2022/05/31 |
| 序號 | 件號 | 名稱 | Number | Description | Qty | |
| | 1 | 電磁吸鐵 | 400-06628 | AT SOLENOID | 1 | |
| | 2 | 10-002-210 內六角螺釘 M4 L=6 | SM-6040602-TP | SCREW M4 L=6 | 4 | |
| | 3 | 10-003-210 開口擋圈 Φ9 | RE-0900000-K0 | E-RING 9 | 1 | |
| | 4 | 10-004-210 彈簧 | 400-06625 | SPRING | 1 | |
| A | 5 | 10-005-210 軸位螺釘 | 400-06617 | AT SOL PIN | 1 | |
| | 6 | 10-006-210 擋圈 | 400-10477 | AT_SOL_COLLAR | 1 | |
| | 7 | 6-18-1850 無頭肉六角螺釘 1/8-44 | SM-8030412-TP | SCREW | 2 | |
| | 8 | 10-008-210 支承板 | 400-10479 | AT_PLATE | 1 | |
| | 9 | 10-009-210 內六角螺釘 M4 L=9 | SM-6040802-TN | SCREW | 2 | |
| | 10 | 10-010-210 墊圈 44.3×Φ9×0.8 | WP-0430801-SC | WASHER 4.3X9X0.8 | 2 | |
| | 11 | 05-11-1900ASS 夾線器轉動臂 B 組件 | 400-10482 | AT_DRIVE_LINK(F)_ASM | 1 | |
| | 12 | 05-12-1900ASS 夾線器轉動臂 A 組件 | 400-10492 | AT_DRIVE_LINK(R)_ASM | 1 | |
| | 13 | 05-13-1900ASS 支架 | 400-10495 | AT_PIVOT_BASE(R) | 1 | |
| | 14 | 10-016-210 內六角螺釘 M4 L=6 | SM-6040602-TP | SCREW M4 L=6 | 2 | |
| B | 15 | 05-15-1900ASS 定位座 | 400-10486 | AT_PIVOT_BASE(F) | 1 | |
| | 16 | 螺釘 M4 L=10 | SM-6041050-TP | SCREW M4 L=10 | 2 | |
| | 17 | 10-017-210 軸位螺釘 | 400-10487 | AT_PIVOT_SCREW | 2 | |
| | 18 | 10-018-210 螺母 M | NM-6040003-SC | NUT M4 | 2 | |
| | 19 | 10-019-210 墊圈 | WP-0400516-UZ | PLAIN WASHER | 3 | |
| | 20 | 10-020-210 帶邊球軸承 Φ4×Φ8×3 | 400-10490 | AT_PIVOT_BEARING | 2 | |
| | 21 | 10-021-210 進桿聯接頭 | 400-10497 | AT_JOINT | 2 | |
| | 22 | 10-023-210 墊圈 | WP-0400516-UZ | PLAIN WASHER | 2 | |
| | 23 | 10-022-210 軸承 Φ4×Φ7×2.5 | 400-10498 | AT_JOINT_BEARING | 2 | |
| | 24 | 10-018-210 螺母 M3 | NM-6030003-SC | NUT M3 | 2 | |
| | 25 | 05-25-1900ASS 調節連桿 | 400-10500 | AT_CONNECTION_BAR | 1 | |
| C | 26 | 10-025-210 R 型銷 Φ1×16 配軸徑 Φ4 | 400-06622 | AT_SNAP_PIN | 2 | |
| | 27 | 10-027-210 第一夾線器 | 400-10503 | THREAD_TENSION_1_ASM | 1 | |
| | 28 | 10-030-210 張力柱 | 400-10504 | THREAD_TENSION_SHAFT | (1) | |
| | 29 | 10-028-210 夾線螺母 | 229-28808 | NUT | (1) | |
| | 30 | 10-029-210 夾線盤 | 229-21506 | THREAD_TENSION_DISK | (2) | |
| | 31 | 10-031-210 夾線彈簧 | 262-18602 | FIRST_THREAD_TENSION_SPRING | (1) | |
| | 32 | 10-032-210 夾線器組件 | 400-10508 | THREAD_TENSION_2_ASM | 1 | |
| | 33 | 10-035-210 過線螺釘座 | 400-10510 | THREAD_TENSION_POST_BASE | (1) | |
| | 34 | 10-036-210 護罩 | 400-10511 | DISK_STOPPER HOLDER_CAP | (1) | |
| | 35 | 10-037-210 螺母 M2 | 400-10512 | THREAD_TENSION_SHAFT_COLLAR | (1) | |
| | 36 | 10-038-210 彈簧 | 400-10513 | DISK_STOPPER_SP | (3) | |
| | 37 | 10-039-210 彈簧罩 | 400-10514 | DISK_STOPPER | (1) | |
| D | 38 | 10-040-210 夾線盤 | 400-10515 | ASSY_THREAD_TENSION_POST | (1) | |
| | 39 | 10-041-210 無頭內六角螺釘 M3 L=4 | 400-10478 | AT_SOL_COLLAR_SCREW | (1) | |
| | 40 | 10-046-210 挑線簧 | 229-21605 | THREAD_TAKE-UP_SPRING | (1) | |
| | 41 | 10-043-210 網頭螺釘 M2.5,L=4 | 400-10521 | HOLD_CAP_SCREW | (3) | |
| | 42 | 10-044-210 螺母 M2 | 400-10522 | SHAFT_NUT | (1) | |
| | 43 | 10-045-210 軸用擋圈 Φ17 | 400-10523 | POST_BASE_C_RING | (1) | |
| | 44 | 10-034-210 拉緊釋放釘 | 400-10509 | THREAD_TENSION_SHAFT | (1) | |
| | 45 | 10-048-210 油氈 | 400-13967 | AT-FELT | 1 | |
| | 46 | 10-049-210 螺釘 | SL-4040681-SC | COMBINATION_SCREW M4 X 8 | 1 | |
| E | 47 | 10-047-210 無頭內六角螺釘 M6 L=16 | SM-8061612-TP | SCREW M6X16 | 1 | |

1

2

3

4

5

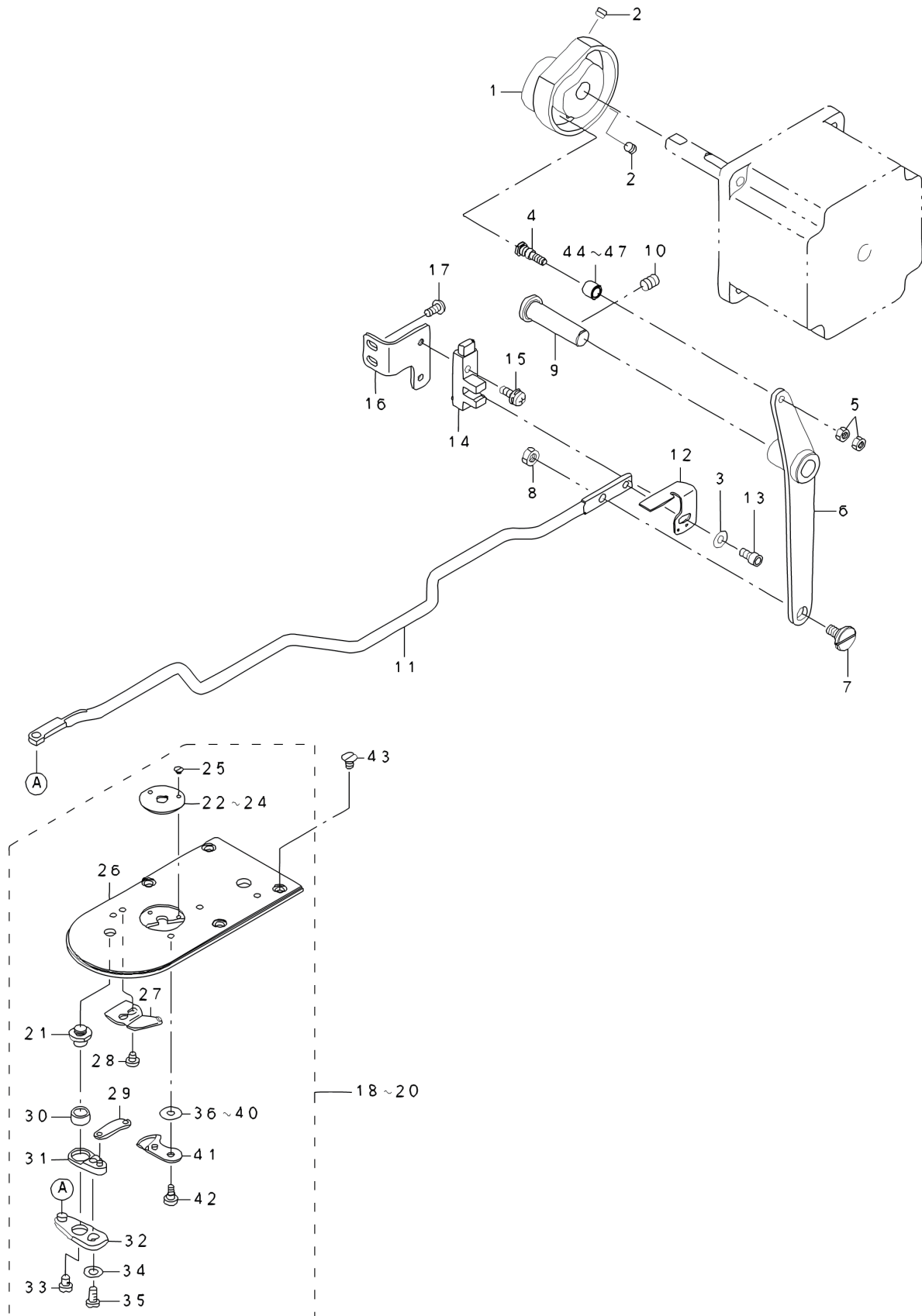
A

B

C

D

E



1

2

3

4

5

| SiRUBA SEQUENCE LIST | | Series | | Parts Group | Subclass Remark | Page |
|----------------------------|----|---------------------|--|---------------|--------------------------------|------------|
| | | LKS-1900D Series | | 06 | | 1 / 1 |
| | | | | | | Date |
| | | | | | | 2022/05/31 |
| 序號 | 件號 | 名稱 | Number | Description | Qty | |
| A | 1 | 06-01-1900ASS | 剪線凸輪 | 400-06711 | THREAD TRIMMER CAM | 1 |
| | 2 | 11-002-210 | 無頭內六角螺釘 M5 L=5 | SM-8050592-TP | SCREW | 2 |
| | 3 | 11-018-210 | 墊圈 $\Phi 43 \times \Phi 9 \times 0.8$ | WP-0450801-SP | WASHER | 1 |
| | 4 | 11-008-210 | 滾輪軸 | 400-40256 | CAM ROLLER SHAFT | 1 |
| | 5 | 11-009-210 | 螺母 M4 | NM-6040001-SP | NUT M4X0.7 | 2 |
| | 6 | 11-010-210 | 剪線槓桿 | 400-06712 | THREAD TRIMMER LINK ASM. | 1 |
| | 7 | 11-011-210 | 軸位螺釘 D=8 H=3.3 | SD-0800327-TP | HINGE SCREW D=8 H=3.2 | 1 |
| | 8 | 11-012-210 | 螺母 M5 | NM-6050001-SP | NUT M5 | 1 |
| | 9 | 03-09-1900ASS | 槓桿軸 | 400-06716 | THREAD TRIMMER SHAFT | 1 |
| | 10 | 11-014-210 | 無頭內六角螺釘 M6 L=8 | SM-8060812-TP | SCREW M6 L=8 | 1 |
| B | 11 | 06-11-1900ASS | 剪線拉桿 | 400-06717 | CONNECTING BAR | 1 |
| | 12 | 11-016-210 | 剪線傳感器擋板 | 400-10525 | THREAD_TRIMMER_SENSOR_SLIT | 1 |
| | 13 | 11-017-210 | 內六角圓柱頭螺釘 M4 L=6 | SM-6040802-TP | SCREW M4X0.7 L=8 | 1 |
| | 14 | 11-019-210 | 傳感器 | HD-0022300-00 | PHOTO SENSOR | 1 |
| | 15 | 11-020-210 | 十字盤頭螺釘 M4 L=12 | SL-4041291-SC | SCREW M4 L=12 | 1 |
| | 16 | 06-16-1900ASS | 剪線傳感器支架 | 400-10526 | THREAD_TRIMMER_SENSOR_BASE | 1 |
| | 17 | 11-022-210 | 內六角圓柱頭螺釘 M4 L=8 | SM-4040855-SP | SCREW | 2 |
| | 18 | -1900 | 針板組件 | 400-06722 | NEEDLE PLATE ASM..A | 1 |
| | 21 | 03-026.2-185 | 動刀曲柄軸 | B2417-280-000 | THREAD CUTTER LEVER SHAFT | (1) |
| | 22 | 03-025-185 | 針板 ($\Phi 1.6$ 、 $\Phi 2.2$ 、 $B \Phi 1.6$) | B2426-280-000 | NEEDLE HOLE GUIDE | (1) |
| | 25 | 11-035-210 | 平機螺釘 3/32-56 L=2.2 | SS-1060210-TP | SCREW3/32-56 L=2.2 | (2) |
| C | 26 | 03-026-185 | 大針板 | 400-06721 | NEEDLE PLATE | (1) |
| | 27 | 03-027-185 | 定刀 | B2424-280-000 | FIXING KNIFE | (1) |
| | 28 | 11-033-210 | 圓柱螺釘 9/64-40 L=3.5 | SS-7090410-SP | SCREW 9/64-40 L= 3.5 | (2) |
| | 29 | 11-030-210 | 動刀連桿 | B2418-280-000 | MOVING KNIFE LINK | (1) |
| | 30 | 11-031-210 | 動刀曲柄襯套 | B2416-280-000 | THREAD CUTTING LEVER RING | (1) |
| | 31 | 11-032-210 | 動刀曲柄組件 | B2415-280-0A0 | THREAD CUTTER LEVER ASM..SMALL | (1) |
| | 32 | 11-034-210 | 動刀驅動連桿組件 | B2414-280-0A0 | THREAD CUTTER LEVER ASM..LARGE | (1) |
| | 33 | 11-040-210 | 圓柱螺釘 11/64-40 L=4. | SS-6110430-TP | SCREW 11/64-40 L= 4.0 | (1) |
| | 34 | 11-037-210 | 墊圈 $\$4.8 \times \7.8×0.8 | WP-0450846-SP | WASHER | (1) |
| | 35 | 11-039-210 | 圓柱螺釘 11/64-40 L=7 | SS-7110740-TP | SCREW11/64-40 L=7 | (1) |
| | 36 | 03-032-185 | 調整墊片 $\Phi 3.8 \times \Phi 11 \times (0.4$ $0.5 0.6)$ | B2423-280-00C | MOVING KNIFE WASHER C | (1) |
| D | 41 | 03-033-185 | 動刀 | B2421-280-0A0 | MOVING KNIFE ASM. | (1) |
| | 42 | 3-54-185 | 軸位螺釘 D=5.0 H=0.9 | SD-0500091-TP | HINGE SCREW D= 5.0H= 0.9 | (1) |
| | 43 | 11-003-210 | 沉頭螺釘 M4 L=8 | SM-1040650-TP | SCREW M4 L=6 | 4 |
| | 44 | 11-004-210 | 滾柱 | 263-15606 | NEEDLE CAM ROLLER A | 1 |
| | | | | | | |
| E | | | | | | |
| | | | | | | |
| | | | | | | |
| | | | | | | |
| | | | | | | |

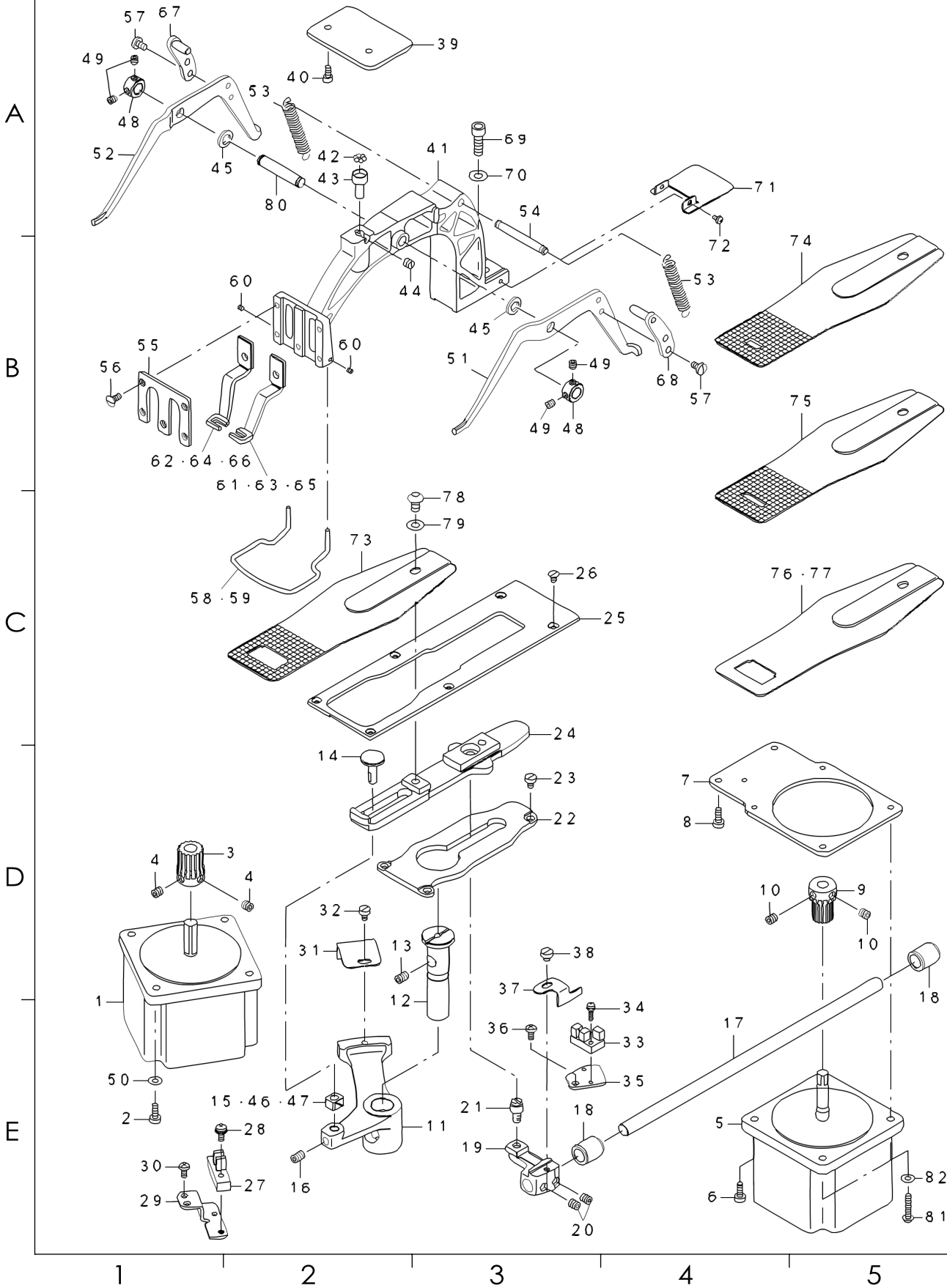
1

2

3

4

5



| SiRUBA SEQUENCE LIST | | Series | | Parts Group | Subclass Remark | Page |
|----------------------------|----------------|-------------------------|---------------|-------------------------------|-----------------|------------|
| | | LKS-1900D Series | | 07 | | 1 / 2 |
| | | | | | | Date |
| | | | | | | 2022/05/31 |
| 序號 | 件號 | 名稱 | Number | Description | Qty | |
| | | 橫向進給電機 | 400-29901 | X FEED MOTOR | 1 | |
| | | 螺釘 M4 L=16 | SM-4041655-SP | SCREW M4 L=16 | 4 | |
| A | 08-002-1900 | 橫向進給齒輪 | 265-01403 | X FEED GEAR | 1 | |
| | | 無頭內六角螺釘 M6 L=6 | SM-8060602-TP | SCREW M6X6 | 2 | |
| | | 縱向進給電機 | 400-29902 | Y FEED MOTOR | 1 | |
| | | 螺釘 M4 L=11 | SM-6041150-TP | SCREW M4 L=11 | 2 | |
| | 07-07-1900ASS | 縱向進給電機支架 | 400-10536 | Y_FEED_MOTOR_BASE | 1 | |
| | | 螺釘 M4 L=11 | SM-6041150-TP | SCREW M4 L=11 | 2 | |
| | 08-005-1900 | 縱向進給齒輪 | 265-01502 | Y FEED GEAR | 1 | |
| | | 無頭內六角螺釘 M6 L=6 | SM-8060602-TP | SCREW M6X6 | 2 | |
| | 07-11-1900ASS | 橫向針距進給臂 | 400-06736 | CLOTH FEED ARM | 1 | |
| | 8-24-1900 | 針距調節軸 | 135-16208 | FEED DRIVING ARM SHAFT | 1 | |
| | 無頭內六角螺釘 M6 L=8 | SM-8060812-TP | SCREW M6 L=8 | 1 | | |
| B | 06-029-185 | 送料滑塊軸 | 262-23305 | SLIDE BLOCK STUD | 1 | |
| | 06-030-185 | 滑塊 | B1414-232-000 | SQUARE BLOCK | 1 | |
| | | 無頭內六角螺釘 M6 L=8 | SM-8060812-TP | SCREW M6 L=8 | 1 | |
| | 07-17-1900ASS | 縱向進給軸 | 400-06738 | Y FEED SHAFT | 1 | |
| | 07-18-1900ASS | 縱向進給軸套 | B2509-704-000 | BUSHING. REAR | 2 | |
| | 8-3-1900 | 縱長進給臂 | 265-00009 | Y FEED ARM | 1 | |
| | 10404-780 | 無頭內六角螺釘 1/4-40 L=6 | SS-8660612-TP | SCREW 1/4-40 L=6 | 2 | |
| | 08-020-1900 | 針距滑塊軸 | 135-17404 | HINGE STUD | 1 | |
| | 07-22-1900ASS | 進給板支撐板 | 400-06740 | CLOTH FEED SUPPORT PLAE | 1 | |
| | | 螺釘 M4 L=6 | SM-6040650-TP | SCREW | 3 | |
| C | 07-24-1900ASS | 送料托架 | 400-06737 | CLOTH FEED PLATE | 1 | |
| | 07-25-1900ASS | 蓋板 | 400-06739 | CLOTH FEED PRESSER PLATE | 1 | |
| | 11-003-210 | 沉頭螺釘 M4 L=8 | SM-1040650-TP | SCREW M4 L=6 | 4 | |
| | | X 向傳感器 | HD-0022300-00 | PHOTO SENSOR | 1 | |
| | | 螺釘 M4 L=12 | SL-4041281-SC | SCREW M4X0.7 L=12 | 1 | |
| | 8-9-1900 | X 向傳感器固定板 | 141-11702 | SENSOR INSTALLING BASE | 1 | |
| | | 螺釘 M4 L=8 | SM-4040855-SP | SCREW | 2 | |
| | 8-8-1900 | x 向傳感器切片 | 141-11504 | CROSSFEED SENSOR SLIT | 1 | |
| | | 螺釘 M4 L=6 | SM-6040650-TP | SCREW M4 L=6 | 1 | |
| | | Y 向傳感器 | HD-0005700-0A | PHOTO SENSOR | 1 | |
| D | | 螺釘 M3 L=12 | SL-4031291-SC | SCREW M3X12 | 1 | |
| | 8-11-1900 | Y 向傳感器固定板 | 141-11801 | SENSOR INSTALLING BASE | 1 | |
| | | 螺釘 M4 L=8 | SM-4040855-SP | SCREW | 1 | |
| | 8-10-1900 | Y 向傳感器切片 | 141-36402 | LENGTHWISE FEED SENSOR SLIT | 1 | |
| | 1-8-185 | 螺釘 11/64-40 L=4.3 | SS-6110480-SP | SCREW 11/64-40 L=4.3 | 1 | |
| | 07-39-1900ASS | 承料板 | 400-39255 | SUPPORT PLATE | 1 | |
| | | 螺釘 M4 L=8 | SM-6040802-TP | SCREW M4X0.7 L=8 | 2 | |
| | 06-008-185 | 送料架 | 400-39013 | FEED BRACKET B | 1 | |
| | 6-10-185 | 鋼球 (1/8") (308-31750) | B2549-280-000 | WORK CLAMP FOOT MOUNTING BASE | 7 | |
| | 06-006-185 | 鋼球座 | B2548-280-000 | BALL RETAINER | 1 | |
| E | 11116-780 | 螺釘 15/64-28 L=8.7 | SS-8150510-TP | SCREW 15/64-28 L= 4.7 | 1 | |
| | 6-3-185 | 墊圈 8.5×14×1 | B2557-280-00A | WASHER FOR DRIVING ARM | 2 | |
| | | 擋圈 Φ8 | CS-0800881-TP | THRUST COLLAR | 2 | |
| | | 螺釘 M5 L=5 | SM-8050512-TP | SCREW M5 L=5 | 4 | |
| | | 墊圈 4 | WP-0450801-SP | WASHER | 4 | |
| | 06-009-185 | 左壓腳提升架 | 262-04008 | LIFTING LEVER RIGHT | 1 | |
| | 06-003-185 | 左壓腳提升架 | 262-04107 | LIFTING LEVER LEFT | 1 | |
| | 06-002-185 | 拉簧 | 141-05407 | CLOTH PRESSER SPRING | 2 | |
| | 8-40-1900 | 拉簧掛銷 | 135-18501 | SPRING SUSPENSION | 1 | |

1

2

3

4

5

| SIRUBA SEQUENCE LIST | | Series | Parts Group | Subclass Remark | Page | |
|----------------------------|------------|---------------------|---------------|----------------------------|----------------------------|---|
| | | LKS-1900D Series | 07 | | 2 / 2 | |
| | | | | | Date | |
| | | | | | 2022/05/31 | |
| 55 | 06-011-185 | 壓腳面板 | 135-18808 | WORK CLAMP FOOT FACE PLATE | 1 | |
| 56 | 10515-780 | 螺釘 11/64-40 1=8.7 | SS-2110930-SP | SCREW 11/64-40 L=8.7 | 5 | |
| 57 | 10146-780 | 螺釘 11/64-40 1=7 | SS-7110740-TP | SCREW11/64-40 L=7 | 4 | |
| 58 | 06-010-185 | 護手圈 | 135-33104 | FINGER GUARD | 1 | |
| 60 | 6-18-185 | 螺釘 1/8-44 1=2.8 | SS-8080310-TP | SCREW 1/8-44 L=2.8 | 2 | |
| A | 65 | 06-012-185 | 右壓腳 | 135-42915 | WORK CLAMP FOOT. RIGHT | 1 |
| | 66 | 06-013-185 | 左壓腳 | 135-43012 | WORK CLAMP FOOT. LEFT | 1 |
| | 67 | 06-001-185 | 壓腳提升槓桿組件 (左) | 400-06745 | LEVER DRIVING PLATE L ASM. | 1 |
| | 68 | 06-001-185 | 壓腳提升槓桿組件 (右) | 400-06747 | LEVER DRIVING PLATE R ASM. | 1 |
| | 69 | 8-61-1900 | 螺釘 M6 L=18 | SM-6061802-TP | SCREW M6 L=18 | 1 |
| | 70 | 6-13-185 | 墊圈 6.2x13x1 | WP-0621016-SD | WASHER 6.2X13X1 | 1 |
| | 71 | 07-71-1900ASS | 遮板 | 400-10570 | HIDDEN PLATE | 1 |
| | 72 | | 螺釘 M3 L=5 | SM-5030501-SC | SCREW M3 L=5 | 2 |
| | 73 | 8-14-1900 | 送料板 A | 141-16107 | FEED PLATE A | 1 |
| | 78 | 8-64-1900 | 螺釘 M6 L=10 | SM-3061052-TP | SCREW M6 L=10 | 1 |
| | 79 | 6-13-185 | 墊圈 6.2x13x1 | WP-0621016-SD | WASHER 6.2X13X1 | 1 |
| B | 80 | 06-004-185 | 提升架軸 | 400-39012 | LIFTING LEVER SHAFT B | 1 |
| | 81 | | 螺釘 M4 L=20 | SM-4042055-SP | SCREW M4 L=20 | 2 |
| | 82 | | 墊圈 4 | WP-0450801-SP | WASHER | 2 |

C

D

E

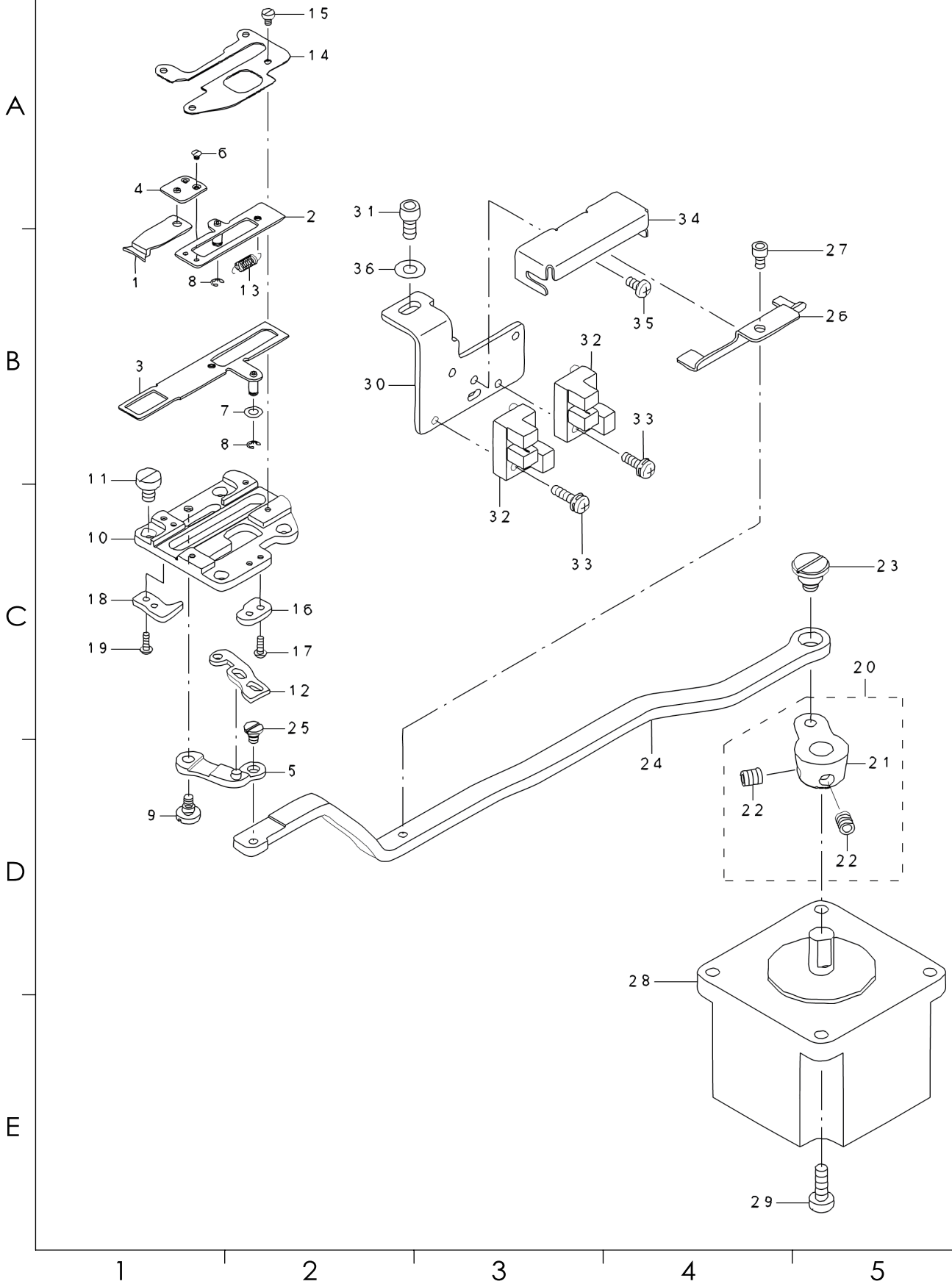
1

2

3

4

5



1

2

3

4

5

| | | | | |
|-----------------------------------|----------------------------|-------------|-----------------|------------|
| SIRUBA SEQUENCE LIST | Series | Parts Group | Subclass Remark | Page |
| | LKS-1900D Series | 08 | | 1 / 1 |
| | | | | Date |
| | | | | 2022/05/31 |

| 序號 | 件號 | 名稱 | Number | Description | Qty |
|----|---------------|--------------------|---------------|------------------------|-----|
| 1 | 12-001-210 | 夾子 | 400-06761 | TC CLAMP | 1 |
| 2 | 12-003-210 | 夾子座組件 | 400-06762 | TC CLAMP PLATE ASM. | 1 |
| 3 | 12-004-210 | 夾線板組件 | 400-06765 | TC SUPPERT PLATE ASM. | 1 |
| 4 | 12-019-210 | 夾子連接板 | 400-06768 | TC JOINT ASM. | 1 |
| 5 | 12-005-210 | 驅動連桿 | 400-15800 | TC-LINK_ASM | 1 |
| 6 | 12-020-210 | 螺釘 M1.6*0.2 L=1.35 | SM-2360110-TP | SCREW M1.6X0.2 L=1.35 | 2 |
| 7 | 12-006-210 | 墊圈 3 | WP-0320500-SC | WASHER M3 | 1 |
| 8 | 12-007-210 | 開口擋圈 | RE-0200000-KO | E-RING | 2 |
| 9 | 12-008-210 | 軸位螺釘 D=4 H=2.6 | SD-0400266-TP | HINGE SCREW D=4 H=2.6 | 1 |
| 10 | 12-009-210 | 夾線器座 | 400-10589 | TC BASE | 1 |
| 11 | 12-021-210 | 一字平面螺釘 M4 L=6 | SM-6040650-TP | SCREW M4 L=6 | 4 |
| 12 | 12-010-210 | 輔助板 | 400-06772 | TC CAM PLATE | 1 |
| 13 | 12-011-210 | 拉簧 | 400-06780 | TC SPRING | 1 |
| 14 | 12-012-210 | 夾線座蓋板 | 400-06781 | TC BASE COVER | 1 |
| 15 | 12-013-210 | 字平面螺釘 M2 L=2.5 | SM-6020350-SP | SCREW M2 L=2.5 | 4 |
| 16 | 12-014-210 | 右夾板 | 400-06782 | TC NOTCH R | 1 |
| 17 | 12-018-210 | 一字平面螺釘 M2 L=6 | SM-4020600-SP | SCREW M2 L=6 | 2 |
| 18 | 12-016-210 | 左夾板 | 400-06777 | TC NOTCH F | 1 |
| 19 | 12-037-210 | 一字平面螺釘 M2 L=4 | SM-6020450-TP | SCREW | 2 |
| 20 | 12-022-210 | 聯結臂組件 | 400-10527 | TC_DRIVING_ARM_ASM. | 1 |
| 21 | 12-023-210 | 聯結臂 | 400-10528 | TC_DRIVING_ARM | (1) |
| 22 | 12-024-210 | 無頭內六角螺釘 M5 L=6 | 400-11152 | TC_ARM_SCREW | (2) |
| 23 | 12-025-210 | 軸位螺釘 D=8 H=4 | SD-0800406-TP | SHOULDER SCREW D8 H4 | 1 |
| 24 | 08-24-1900ASS | 夾線器拉桿 | 400-06776 | TC CONNECTING LINK | 1 |
| 25 | 12-027-210 | 軸位螺釘 \$ 3.5,L=1.5 | SD-0350156-TP | SHOULDER SCREW | 1 |
| 26 | 08-26-1900ASS | 傳感器擋板 | 400-10530 | SENSOR_SLIT | 1 |
| 27 | 12-029-210 | 內六角圓柱頭螺釘 M3 L=5 | SM-6030502-TP | BOLT M3X5 | 1 |
| 28 | | 步進電機 | 400-06864 | THREAD CLAMP MOTOR | 1 |
| 29 | 12-031-210 | 螺釘 M4 L=12 | SM-6041200-SP | SCREW M4 L=12 | 4 |
| 30 | 08-30-1900ASS | 感應器安裝座 | 400-10531 | SENSOR_INSTALLING_BASE | 1 |
| 31 | | 內六角圓柱頭螺釘 M4 L=8 | SM-6040802-TP | SCREW M4X0.7 L=8 | 1 |
| 32 | | 感應器 | HD-0005700-0A | PHOTO SENSOR | 2 |
| 33 | | 十字螺釘 M3 L=10 | SL-4031091-SC | SCREW M3 X 10 | 2 |
| 34 | 08-34-1900ASS | 感應器防護板 | 400-10532 | DUST_GUARD | 1 |
| 35 | | 十字螺釘 M3 L=6 | SM-4030601-SN | SCREW M3 X 6 | 1 |
| 36 | 12-002-210 | 墊圈 4 | WP-0450801-SP | WASHER | 1 |

A

B

C

D

E

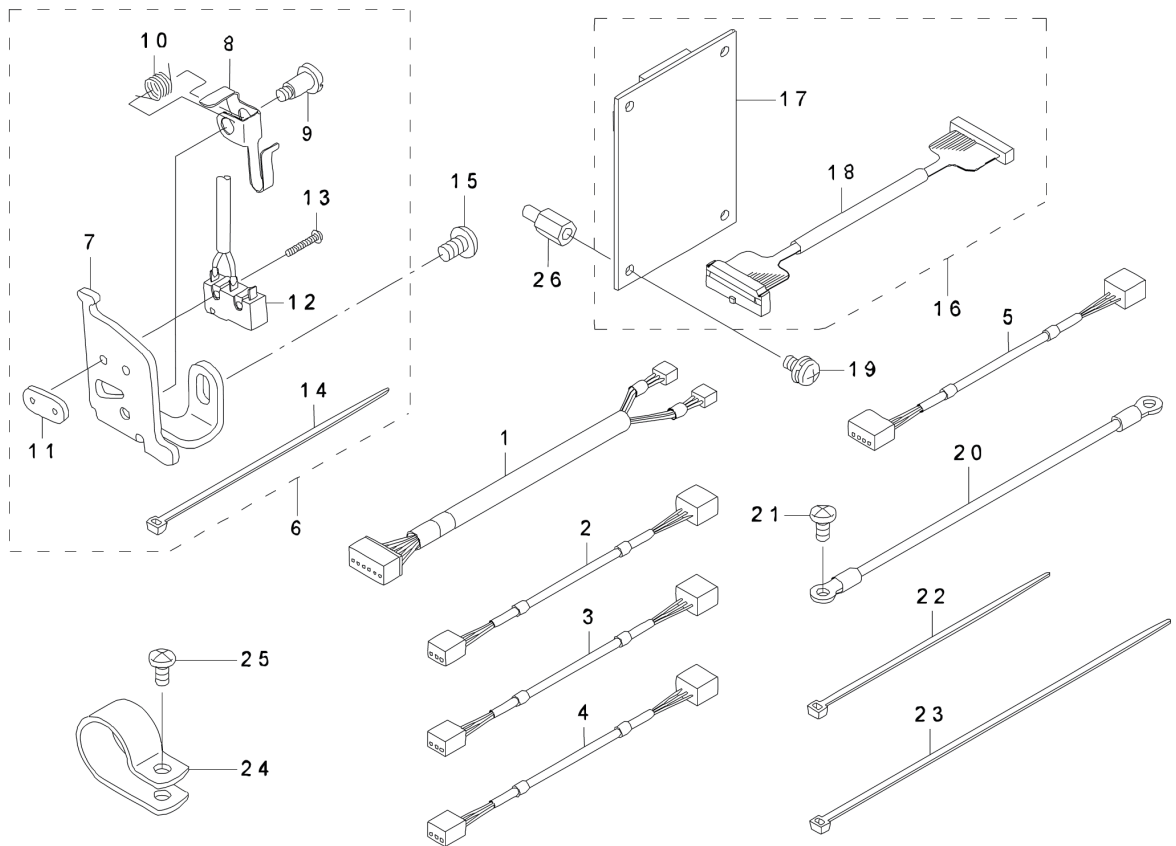
A

B

C

D

E



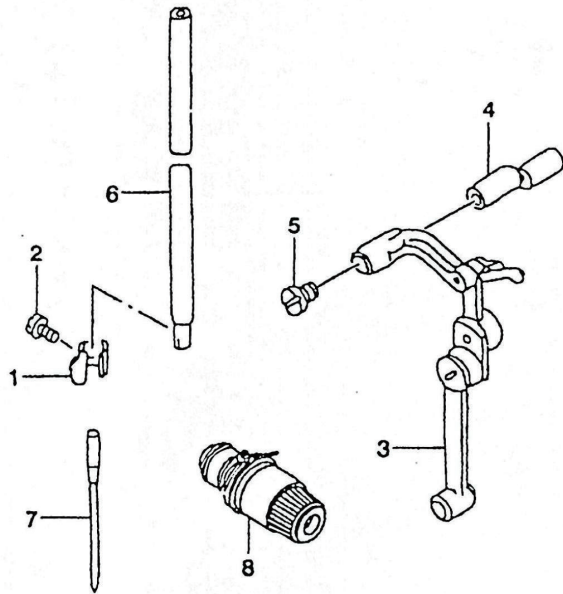
| | | | | |
|-----------------------------------|----------------------------|-------------|-----------------|------------|
| SIRUBA SEQUENCE LIST | Series | Parts Group | Subclass Remark | Page |
| | LKS-1900D Series | 09 | | 1 / 1 |
| | | | | Date |
| | | | | 2022/05/31 |

| 序號 | 件號 | 名稱 | Number | Description | Qty |
|----|------------|----------------|---------------|--------------------------|-----|
| 1 | | 電纜線組件 | 400-05729 | TH SENSOR CABLE ASM. | 1 |
| 2 | | 電纜線組件 | 400-05731 | Y SENSOR CABLE ASM. | 1 |
| 3 | | 電纜線組件 | 400-05732 | PF SENSOR CABLE ASM. | 1 |
| 4 | | 電纜線組件 | 400-05730 | X SENSOR CABLE ASM. | 1 |
| 5 | | 電纜線組件 | 400-05733 | TT SENSOR CABLE ASM. | 1 |
| 6 | | 安全開關組件 | 400-06495 | SAFETY SW ASM. | 1 |
| 7 | 03-064-210 | 安全開關座 | 400-06496 | SAFETY SW BASE | (1) |
| 8 | 03-065-210 | 安全開關臂 | 236-38109 | SAFETY SWITCH ARM. | (1) |
| 9 | 03-066-210 | 安全開關軸 | 400-06497 | SAFETY SW ARM SHAFT | (1) |
| 10 | 03-067-210 | 扭轉彈簧 | 236-38208 | SAFETY SWITCH SPRING | (1) |
| 11 | 03-068-210 | 安全開關壓板 | 236-38406 | SAFETY SWITCH NUT | (1) |
| 12 | | 開關 | 400-05734 | SAFETY SW CABLE ASM. | (1) |
| 13 | 03-069-210 | 十字盤頭螺釘 M2×12 | SM-4021201-SC | SCREW M2 L=12 | (2) |
| 14 | 03-070-210 | 尼龍紮帶 3×100 | EA-9500B01-00 | CABLE BAND | (1) |
| 15 | 03-072-210 | 十字盤頭螺釘 M5 L=10 | SM-4050855-SP | SCREW | 1 |
| 16 | | 印製電路板組件 | 400-05664 | INT PCB ASM. | 1 |
| 17 | | 印製電路板 | 400-05660 | INT PCB | (1) |
| 18 | | 電纜線組件 | 400-05725 | INT CABLE ASM. | (1) |
| 19 | | 螺釘 M4 L=8 | SL-4040881-SF | SCREW M4 L=8 | 4 |
| 20 | | 接地電纜線組件 | 141-15554 | HEAD GROUND CABLE A ASM. | 1 |
| 21 | | 螺釘 M4 L=8 | SM-4040855-SP | SCREW | 1 |
| 22 | | 尼龍紮帶 3×100 | EA-9500B01-00 | CABLE BAND | 6 |
| 23 | | 尼龍紮帶 | EA-9500B02-00 | CABLE BAND 150 | 3 |
| 24 | | 電線夾 | HX-0015000-OK | CABLE CLIP | 1 |
| 25 | | 螺釘 M4 L=8 | SM-4040855-SP | SCREW | 1 |
| 26 | 01-19-1790 | 六角柱釘 | HX-0033900-00 | STUD | 4 |

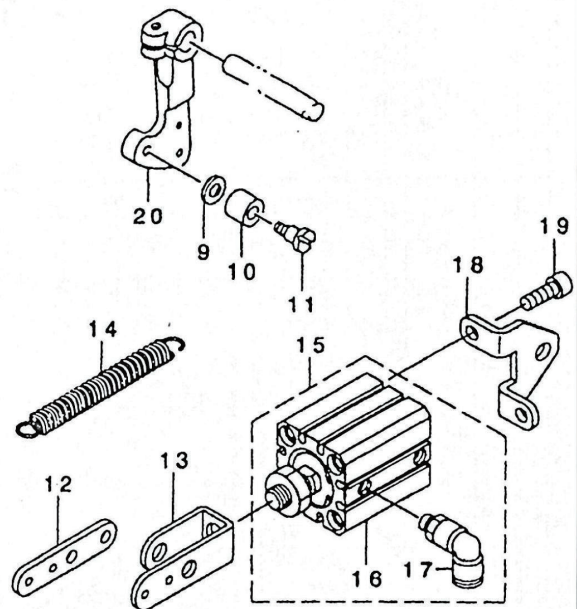
| | | | | | |
|---|--|--|--|--|--|
| C | | | | | |
| D | | | | | |
| E | | | | | |

| | | | | |
|-----------------------------|-------------------------|------------------|-----------------|------------|
| SIRUBA PARTS LIST | Series | Parts Group | Subclass Remark | Page |
| | LKS-1900D Series | 10.11.12. | | 1 / 1 |
| | | | | Date |
| | | | | 2022/05/31 |

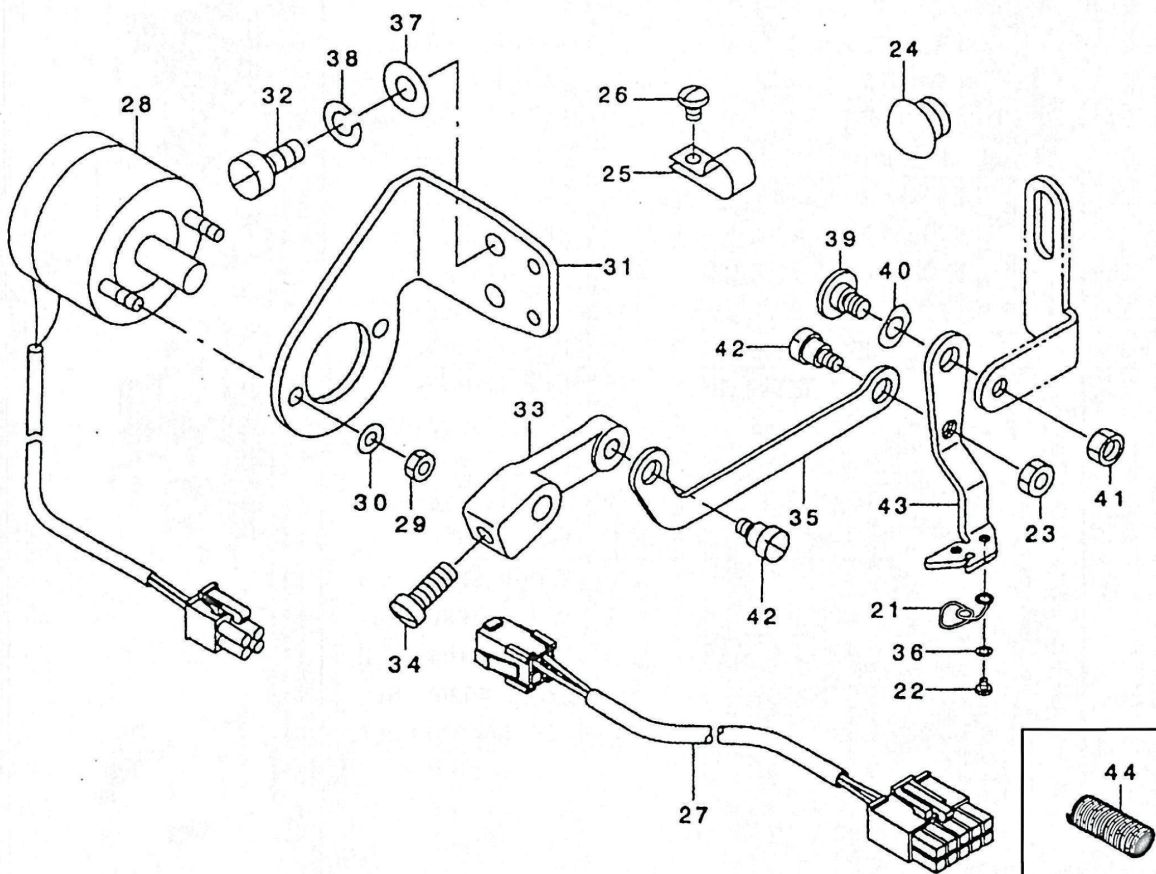
10. RHEIN1903S△-30△: NEEDLE BAR & THREAD TENSION COMPONENTS



11. RHEIN1903S△-30△: PRESSER LIFTER COMPONENTS



12. RHEIN1903S△-30△: WIPER MECHANISM COMPONENTS



A

B

C

D

E

1 2 3 4 5

| | | | | |
|-----------------------------------|-----------------------------|------------------|-----------------|------------|
| SIRUBA SEQUENCE LIST | Series | Parts Group | Subclass Remark | Page |
| | LKS-1900D Series | 10.11.12. | | 1 / 1 |
| | | | | Date |
| | | | | 2022/05/31 |

| 序號 | 件號 | 名稱 | Number | Description | Qty |
|----|---------------|-----------------|---------------|--------------------------------|-----|
| 1 | 03-010-185 | 針桿過線板 | D1405-M7W-F00 | NEEDLE BAR THREAD GUIDE | 1 |
| 2 | 3-15-185 | 螺釘 1/8-44 L=4.5 | SS-7080510-TP | SCREW 1/8-44 L=4.5 | 1 |
| 3 | 03-003-185 | 挑線桿組件 | D1901-L7V-VB0 | THREAD TAKE-UP LEVER ASM | 1 |
| 4 | 02-003-1851 | 挑線桿曲柄連接銷 | D1904-L7V-V00 | LINK TAKE-UP LEVER PIN,HEAVY | 1 |
| 5 | | 螺釘 | D1906-L7V-V00 | SET SCREW | 1 |
| 6 | 03-008-185 | 針桿 | D1401-L7V-V00 | NEEDLE BAR | 1 |
| 7 | DP×17 #14 | 機針 DPX17 #14 | MDP-170B1400 | NEEDLE DP×17 #14 | 1 |
| 8 | | 夾線器組件 | B2302-205-0A0 | TENSION CONTROLLER NO.2 ASM | 1 |
| 9 | DQ-0621010-PD | 墊圈 | B1853-512-00E | HOOK DHAFT WASHER | 1 |
| 10 | 03-002-1851 | 滾子 | B2619-372-000 | STOP MOTION TRIPPING LEVER CAM | 1 |
| 11 | ZD-7079127-55 | 軸位螺釘 | SD-0791271-SP | HINGE SCREW D=7.94 H=12.7 | 1 |
| 12 | 11-12-1903 | 連桿 | 141-47003 | SOLENOID LINK | 1 |
| 13 | 11-13-1903 | 連接架 | 141-47102 | CYLINDER KNUCKLE | 1 |
| 14 | 11-14-1903 | 拉簧 | 100-87906 | TENTION SPRING | 1 |
| 15 | 11-15-1903 | 氣缸組件 | 141-47359 | PRESSER LIFTING CYLINDER ASM | 1 |
| 16 | 11-16-1903 | 氣缸 | PA-2502007-A0 | AIR CYLINDER | (1) |
| 17 | 11-17-1903 | 氣管接頭 | PJ-3040605-02 | ELBOW UNION M5×6 | (2) |
| 18 | 11-18-1903 | 氣缸支架 | 141-47201 | PRESSER LIFTING CYLINDER BASE | 1 |
| 19 | GB70 | 螺釘 | SM-6061602-TP | SCREW M6 L=16 | 2 |
| 20 | 03-004-1851 | 連接桿 | 135-41313 | CONNECTING ARM | 1 |
| 21 | 12-21-1903 | 彈簧夾 | 141-47805 | SPRING | 1 |
| 22 | 12-22-1903 | 螺釘 | SS-7060310-SP | SCREW 3/32-56 L=3 | 2 |
| 23 | 12-23-1903 | 螺母 | NS-6110310-SP | NUT 11/64-40 | 1 |
| 24 | 12-24-1903 | 堵頭 | TA-1250705-R0 | RUBBER PLUG | 1 |
| 25 | | 線夾 | HX-0012300-0C | CABLE CLIP | 3 |
| 26 | 12-26-1903 | 螺釘 | SS-4110615-SP | SCREW 11/64-40 L=6 | 3 |
| 27 | 12-27-1903 | 電纜組件 | 141-42251 | SOLENOID RELAY CABLE ASM | 1 |
| 28 | 12-28-1903 | 電磁鐵組件 | 141-47755 | SOLENOID FOR WIPER ASM | 1 |
| 29 | 12-29-1903 | 螺母 | NM-6040003-SC | NUT M4 | 2 |
| 30 | 12-30-1903 | 執片 | WS-0410002-KS | SPRING WASHER M4 | 2 |
| 31 | 12-31-1903 | 電磁鐵支架 | 138-64509 | SOLENOID FITTING PLATE | 1 |
| 32 | 12-32-1903 | 螺釘 | SS-6111010-TP | SCREW 11/64-40 L=9.5 | 2 |
| 33 | 12-33-1903 | 曲柄 | B2102-205-00A | WIPER ARM | 1 |
| 34 | 12-34-1903 | 螺釘 | SS-7111120-SP | SCREW 11/64-40 L=10.5 | 1 |
| 35 | 12-35-1903 | 連接桿 | 141-47607 | WIPER LINK | 1 |
| 36 | 12-36-1903 | 墊片 | WP-0280500-SC | WASHER | 1 |
| 37 | 12-37-1903 | 墊片 | WP-0450801-SD | WASHER 4.5×10×0.8 | 2 |
| 38 | 12-38-1903 | 彈簧擋圈 | WS-0451040-KP | SPRING WASHER 4.5×8.5×1 | 2 |
| 39 | 12-39-1903 | 螺釘 | SD-0640261-SP | HINGE SCREW D=3.65 H=2.6 | 1 |
| 40 | 12-40-1903 | 波形墊片 | WZ-0640200-KP | WAVE WASHER | 1 |
| 41 | 12-41-1903 | 螺母 | NS-6120310-SP | NUT 3/16-28 | 1 |
| 42 | 12-42-1903 | 軸位螺釘 | SD-0600181-TP | HINGE SCREW | 2 |
| 43 | 12-43-1903 | 撥線桿 | 141-47508 | WIPER | 1 |
| 44 | 12-44-1903 | 堵頭 | 141-48407 | VERTICAL FEED SHAFT SPRING | 1 |

E

1

2

3

4

5

SIRUBA

PARTS LIST

Series

**LKS-1900D
Series**

Parts Group

13

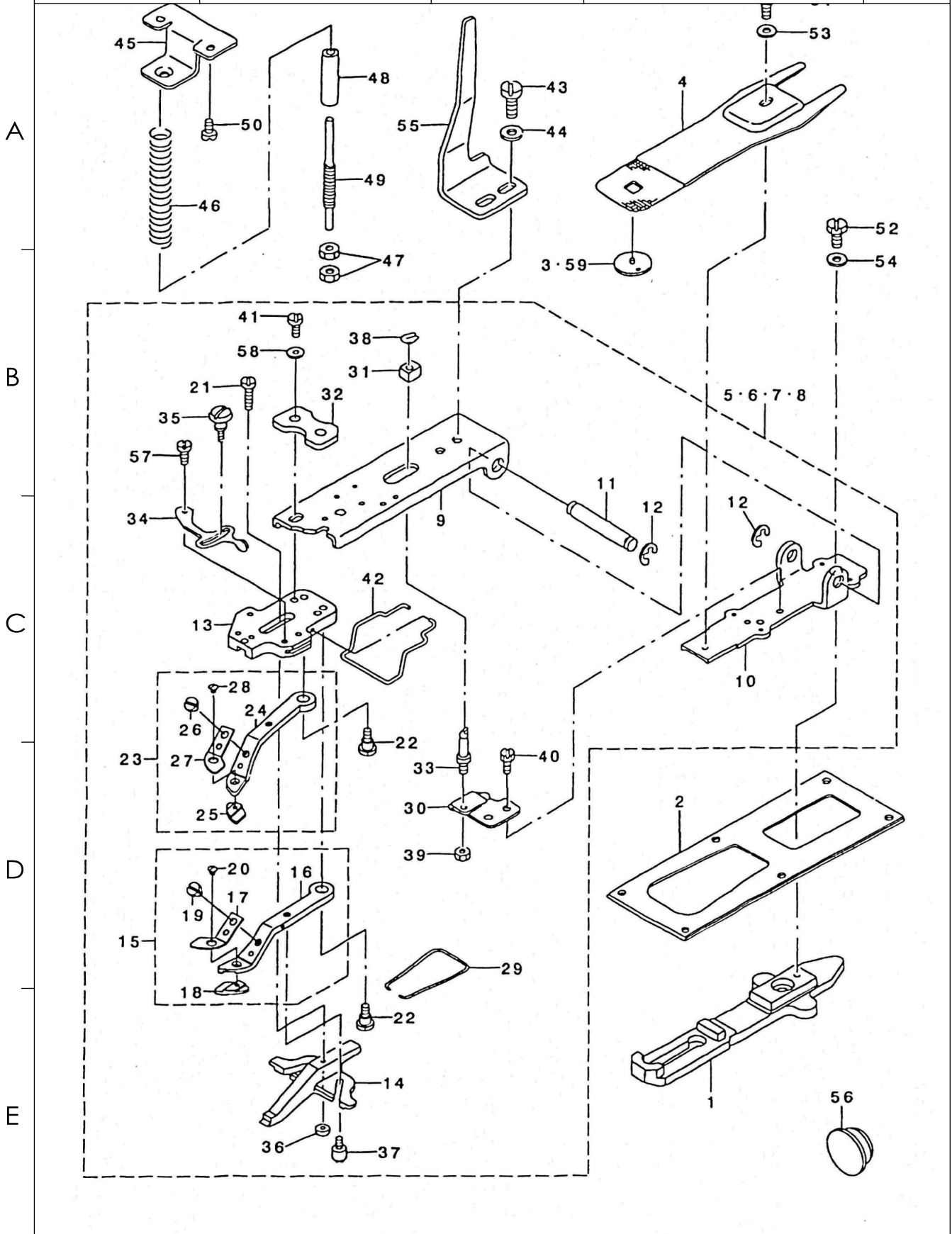
Subclass Remark

Page

1 / 1

Date

2022/05/31



1

2

3

4

5

| | | | | |
|-----------------------------------|-----------------------------|-------------|-----------------|------------|
| SIRUBA SEQUENCE LIST | Series | Parts Group | Subclass Remark | Page |
| | LKS-1900D Series | 13 | | 1 / 1 |
| | | | | Date |
| | | | | 2022/05/31 |

| 序號 | 件號 | 名稱 | Number | Description | Qty |
|------|---------------|-------------------|---------------|--------------------------------|-----|
| A 1 | 08-013-1900 | 送料托架 | 141-45106 | CLOTH FEED PLATE | 1 |
| 2 | 08-021-1900 | 蓋板 | 135-17602 | FEED PLATE PRESSER PLATE | 1 |
| 3 | 09-003-1851 | 針板 | MAZ-15501000 | GUIDE | 1 |
| 4 | 09-004-1851 | 送料板 | MAZ-15502000 | PRESSURE PLATE | 1 |
| 5 | 09-005-1851 | 夾鉗組件 | 141-45551 | SMALL CLAMP MECHANISM ASM | 1 |
| 6 | 09-006-1851 | 夾鉗導板槓桿組件 | 141-45650 | MEDIUM CLAMP MECHANISM ASM | 1 |
| 7 | 09-007-1851 | 夾鉗連接板組件 | 141-45759 | LARGE CLAMP MECHANISM ASM | 1 |
| 8 | 09-008-1851 | 夾鉗連接板 | 141-45858 | VERY SMALL CLAMP MECHANISM ASM | 1 |
| 9 | 09-008.2-1851 | 套 | 141-46203 | PICK-UP FOOT INSTALLING BASE | 2 |
| 10 | 09-009-1851 | 壓腳支架架 | 141-46104 | PICK-UP INSTALLING BASE | 2 |
| 11 | 09-027-1851 | 壓腳支架架鉸鏈銷 | 141-41402 | INSTALLING SHAFT | 1 |
| 12 | 896-07000 | 開口擋圈 | RE-0700000-K0 | E-RING | 2 |
| 13 | 09-010-1851 | 夾腳導板 | 141-46302 | PICK-UP FOOT INSTALLING BASE | 1 |
| 14 | 09-011-1851 | 鈕扣導板 | B2552-372-000 | BUTTON CLAMP SLIDE | 1 |
| 15 | 09-012-1851 | 右壓腳組件 | 141-48852 | SMALL CLAMP JAW LEVER ASM.,R | 1 |
| 16 | 09-013-1851 | 右壓腳 | MAZ-15507000 | SMALL CLAMP JAW LEVER ASM.,L | 2 |
| B 17 | 19-014-1851 | 壓簧片 | MAZ-15509000 | SPRING, RIGHT | 1 |
| 18 | GB | 彈性圓柱銷 | 141-48803 | PLATE K,R | 1 |
| 19 | YD-7090410-55 | 螺釘 9/64-40 L=4 | SS-7090410-SP | SCREW 9/64-40 L=4 | 1 |
| 20 | | 軸位螺釘 | SS-2060310-SP | SCREW 3/32-56 L=3 | 1 |
| 21 | ZD-7060038-55 | 軸位螺釘 | SD-0550301-SP | HINGE SCREW D=5.5 H=3 | 1 |
| 22 | ZD-4064040 | 軸位螺釘 | SD-0640391-TP | HINGE SCREW D=6.35 H=3.9 | 2 |
| 23 | 09-015-1851 | 左壓腳組件 | 141-48951 | SMALL CLAMP JAW LEVER ASM.,L | 1 |
| 24 | 09-016-1851 | 左壓腳 | MAZ-15508000 | SMALL CLAMP JAW LEVER, L | 1 |
| 25 | GB | 彈性圓柱銷 | 141-48902 | PLATE K,L | 1 |
| 26 | YD-7090410-55 | 螺釘 9/64-40 L=4 | SS-7090410-SP | SCREW 9/64-40 L=4 | 1 |
| 27 | 09-017-1851 | 壓簧片 | MAZ-15510000 | SPRING,LEFT | 1 |
| 28 | DQ-0501011-PD | 墊圈 5×10.5×1 | SS-2060310-SP | SCREW 3/32-56 L=3 | 1 |
| 29 | 09-018-1851 | 鈕扣夾腳彈簧 | MAZ-15513000 | BUTTON CLAMP JAW LEVER SPRING | 1 |
| C 30 | 09-019-1851 | 定位支架架 | MAZ-15514000 | SUPPORT PLATE | 1 |
| 31 | 09-020-1851 | 中心定位塊 | MAZ-15515000 | SLIDE BLOCK | 1 |
| 32 | 09-021-1851 | 壓簧座 | 141-46401 | PRESSUER PLATE | 1 |
| 33 | 09-028-1851 | 中心定位軸 | 135-40901 | STATIONING BLOCK SHAFT | 1 |
| 34 | 09-022-1851 | 限位板 | B2548-372-000 | SNAP FASTENER CLAMP STOP LEVER | 1 |
| 35 | 09-023-1851 | 螺釘 | B2549-372-000 | CLAMP SCREW A | 1 |
| 36 | 09-024-1851 | 螺母 | B2553-372-000 | NUT | 1 |
| 37 | ZD-5054060-55 | 軸位螺釘 | B2560-372-000 | BUTTON CLAMP STOP PIN | 1 |
| 38 | 896-05000 | 開口擋圈 | D2548-232-D00 | SNAP RING,FOR CONNECTING ROD | 1 |
| 39 | YM-6150309-55 | 螺母 15/64-28 | NS-6150310-SP | NUT 15/64-28 | 1 |
| 40 | YD-2110510-55 | 螺釘 11/64-40 L=5.3 | SS-9110460-CP | SCREW 11/64-40 L=4 | 1 |
| D 41 | YD-7110810-55 | 螺釘 11/64-40 L=7.8 | SS-9621413-SP | SCREW 3/16-32 L=13.5 | 1 |
| 42 | | 螺釘 11/64-40 L=5.3 | D3130-MIY-C00 | FINGER GUARD | |
| 43 | YD-2151110-55 | 螺釘 15/64-28 L=9.5 | SS-9151120-CP | SCREW 15/64-28 L=11 | 1 |
| 44 | DQ-0612515-PD | 擋圈 | WP-0612516-SD | WASHER 6.1×15.2×2.5 | 1 |
| 45 | 09-026-1851 | 墊圈 | 138-11906 | ACCEPT PLATE, UPPER | 1 |
| 46 | 09-029-1851 | 壓簧 | 138-12003 | PRESSURE SPRING | 1 |
| 47 | 27-068-783V | 壓緊調節螺母 | B3125-012-000 | THREAD TENSION NUT | 1 |
| 48 | 09-031-1851 | 襯套 | D2527-232-D00 | SLEEVE | 1 |
| 49 | 09-032-1851 | 支承軸 | 141-46906 | ADJUSTING SHAFT | 1 |
| 50 | YD-7110810-55 | 螺釘 | SS-7110840-SP | SCREW 11/64-40 L=7.8 | 1 |
| 51 | YD-2110510-55 | 螺釘 | SS-9110543-CP | SCREW 11/64-40 L=5.3 | 1 |
| 52 | YD-6151010-55 | 螺釘 | SM-6061202-TP | SCREW M6 L=12 | 1 |
| E 53 | DQ-0501011-PD | 墊圈 | WP-0501016-SD | WASHER 5×10.5×1 | 1 |
| 54 | DQ-0612515-PD | 墊圈 | WP-0612516-SD | WASHER 6.1×15.2×2.5 | 1 |
| 55 | 09-025-1851 | 抬壓腳推板 | MAZ-1551600 | MOVING PLATE | 1 |
| 56 | | 橡膠堵 | TA-2100904-RO | RUBBER PLUG | 1 |
| 57 | ZD-4052020-55 | 螺釘 | SD-0550181-SP | HINGE SCREW D=5.5 H=1.8 | 1 |
| 58 | DQ-0501011-PD | 墊圈 | WP-0501016-SD | WASHER 5×10.5×1 | 1 |
| 59 | | 小針板 | 141-49603 | NEEDLE HOLE GUIDE | |

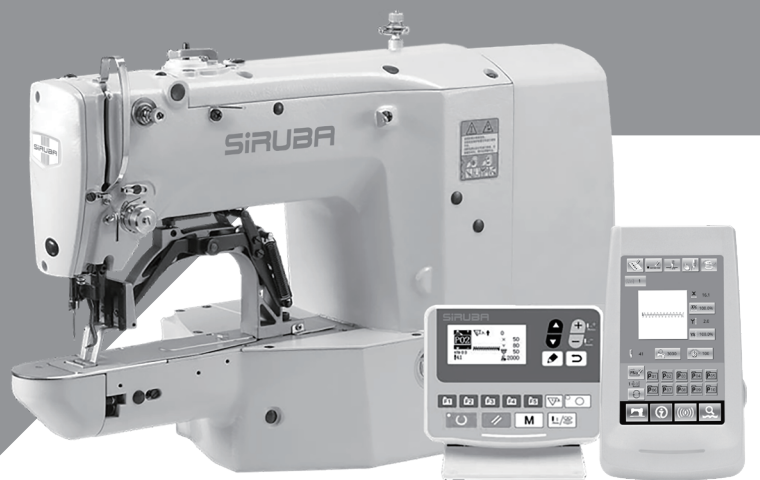
1

2

3

4

5



高林股份有限公司
KAULIN MFG. CO., LTD.

由於對產品的改良及更新，本產品使用說明書中與零件圖之產品及外觀的修改恕不事先通知！
The specification and/or appearances of the equipment described in this instruction book & parts list are subject to change because of modification which will without previous notice.
CQL-23X03.JAN.2023