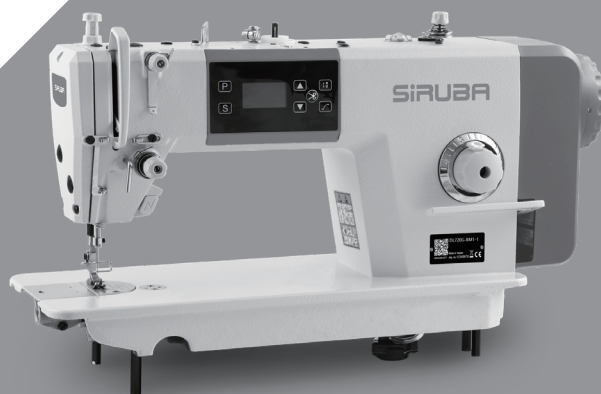


SIRUBA

零件圖

PARTS LIST

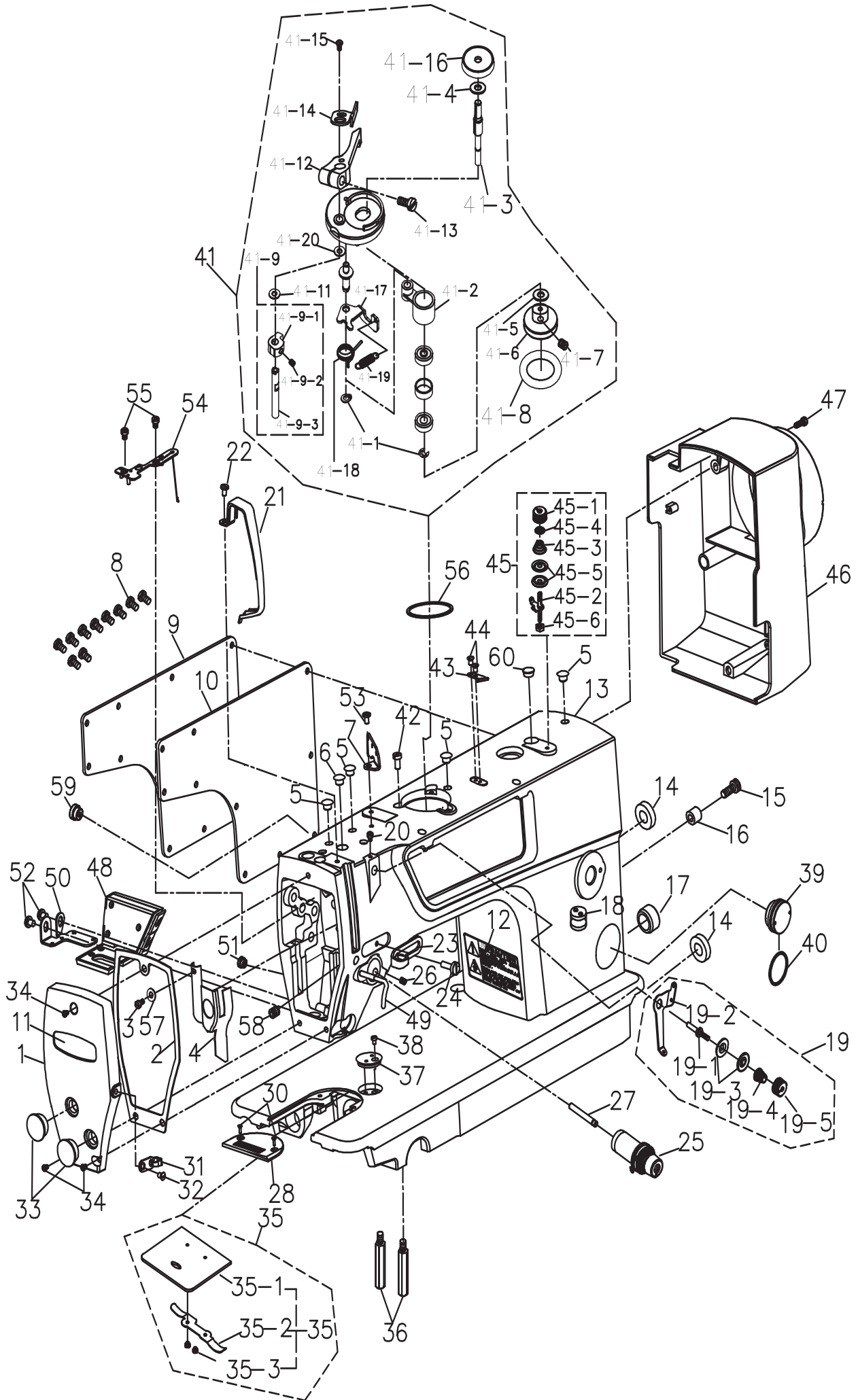
DL720G



CE

1. 機殼部件	MACHINE FRAME & MISCELLANEOUS COVER COMPONENTS	1
2. 上軸 / 挑線部件	MAIN SHAFT & THREAD-UP LEVER COMPONENTS	4
3. 針桿 / 豎軸 / 下軸部件	NEEDLE BAR, UPRIGHT SHAFT & HOOK DRIVING SHAFT COMPONENTS	7
4. 壓桿部件	HAND LIFTER COMPONENTS	9
5. 送料部件	FEED MECHANISM COMPONENTS	11
6. 自動切線部件	THREAD TRIMMER COMPONENTS	14
7. 電子夾線器，選針盒 部件	ELECTRONIC CONDUCTOR HOLDER NEEDLE SELECTION BOX COMPONENTS	17
8. 潤滑 / 繞線部件	OIL LUBRICATION COMPONENTS	19
9. 油盤部件	OIL RESERVOIR COMPONENTS	19
10. 過線架部件	THREAD STAND COMPONENTS	22
11. 附件	ACCESSORIES	24

1. 機殼部件 MACHINE FRAME & MISCELLANEOUS COVER COMPONENTS



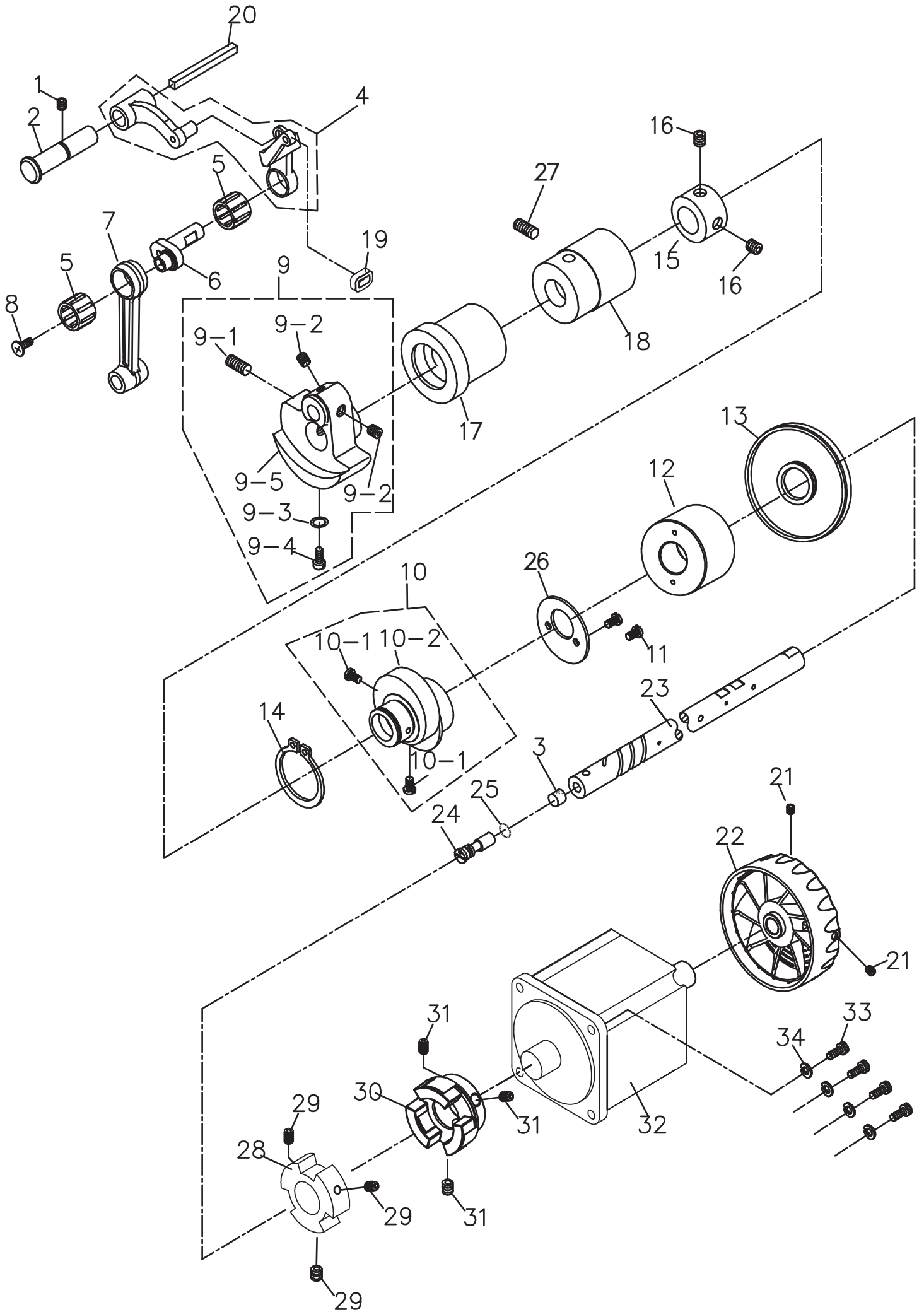
1.機殼部件 MACHINE FRAME & MISCELLANEOUS COVER COMPONENTS

序號 Ref.NO.	新編號 new part NO.	名稱 Part name	Name of parts	數量 Qty	備註 Note
1	280001001	面板	Face plate	1	
2	280001002	面板墊	Face plate agsket	1	
3	S073184404	防油板螺釘	Screw 1/8 × 44 L=4	1	
4	280001004	面部防油板	Arm oil shield	1	
5	991001005	挑線連杆銷孔塞	Rubber plug	4	
6	991001006	針杆曲柄螺孔塞	Rubber plug	1	
7	991001007	三眼過線板	Thread guide rod	1	
8	S094762809	後窗板螺釘	Screw 3/16 × 28 L=9	11	
9	280001009	後窗板	Side plate	1	
10	280001010	後窗板墊	Gasket	1	
11	280001011	面板商標牌	Face plate	1	
12	991001012	安全指示牌	Safety lable	1	
13	281001013	機殼組件	Machine cover	1	
14	991001014	送料調節器孔塞	Rubber plug	2	
15	S184782818	倒縫限位套緊固螺釘	Screw 3/16 × 28 L=18	1	
16	991001016	倒縫限位套	Reverse feed lever stopper	1	
17	991001017	下軸盲孔塞	Rubber plug	1	
18	991001018	導線過線套	Magnet cord rubber	1	
19	991001019	小夾線器組件	Thread tension asm	1	
19-1	991001019-1	小夾線螺釘	Small clip line screw	1	
19-2	991001019-2	小夾線過線板	Thread tension guide	1	
19-3	991001019-3	小夾線板	Thread tension disk	2	
19-4	991001019-4	小夾線簧	Thread tension spring	1	
19-5	991001019-5	小夾線螺母	Thread tension nut	1	
20	S114374006	小夾線組件支架螺釘	Screw	1	
21	991001021	挑線防護罩	Thread take-up lever cover	1	
22	S094762806	挑線防護罩螺釘	Screw 3/16 × 28 L=6	1	
23	991001023	右線鈎	Arm thread guide right	1	
24	S074374006	右線鈎螺釘	Screw 11/64 × 40 L=6	1	
25	280001025	夾線器組件	Thread tension asm	1	
26	S115952807	夾線器支緊螺釘	Screw 15/64 × 28 L=7	1	
27	280001027	松線釘	Tension releasing	1	
	991001028	針板 (薄料/4排牙)	Throat plate	1	
28	991001028D	針板 (大針距/3排牙)	Throat plate	1	
	0303D	針板 B2.6(大旋梭/3排牙)	Throat plate	1	
30	S044374006	針板螺釘	Screw 11/64 × 40 L=6	2	
31	991001031	左線鈎	Arm thread guide left	1	
32	S074374006	左線鈎螺釘	Screw 11/64 × 40 L=6	1	
33	991001033	面板調節孔塞	Rubber plug	2	
34	S094762808	面板螺釘	Screw 3/16 × 28 L=8	3	
35	991001035	推板組件	Slide plate asm	1	
35-1	991001035-1	推板	Slide plate	1	
35-2	991001035-2	推板簧	Bed slide spring	1	
35-3	S082385602	推板簧螺釘	Screw 3/32 × 56 L=2.2	2	
36	280001036	底板支柱	Bed slide spring	4	
37	991001037	卷邊器	Ruler stopper	1	
38	S074374006	卷邊器螺釘	Screw 11/64 × 40 L=6	2	
39	280001039	油窗	Oil sight window	1	
40	280001040	油封	O ring	1	
41	991001041	繞線器組件	Winder assembly	1	
41-1	991001041-1	擋圈E4	Ring E4	2	
41-2	991001041-2	繞線軸基座	Bobbin base	1	
41-3	991001041-3	繞線軸	Spool	1	

1.機殼部件 MACHINE FRAME & MISCELLANEOUS COVER COMPONENTS

序號 Ref.NO.	新編號 new part NO.	名稱 Part name	Name of parts	數量 Qty	備註 Note
41-4	991001041-4	O型圈P9	O ring	1	
41-5	991001041-5	平墊圈S6	Flat washer	1	
41-6	991001041-6	繞線輪	Winding wheel	1	
41-7	991001041-7	螺釘M5X5	Screw M5x5	2	
41-8	991001041-8	橡皮墊圈29	Rubber washer	1	
41-9	991001041-9	梭芯夾凸輪組件	Shuttle cam asm.	1	
41-9-1	991001041-9-1	梭芯夾凸輪	Shuttle cam	1	
41-9-2	991001041-9-2	螺釘M5X5	Screw M5x5	1	
41-9-3	991001041-9-3	梭芯夾軸	Shuttle clamp shaft	1	
41-11	991001041-11	平墊圈S6	Flat washer	2	
41-12	991001041-12	梭芯壓臂柄	Shuttle arm handle	1	
41-13	991001041-13	螺釘M4X12	Screw	1	
41-14	991001041-14	梭芯夾	Bobbin clip	1	
41-15	991001041-15	螺釘SM4.76	Screw	2	
41-16	991001041-16	梭芯座	Bobbin base	1	
41-17	991001041-17	繞線杠杆	Winding lever	1	
41-18	991001041-18	彈簧	Spring	1	
41-19	991001041-19	彈簧	Spring	1	
41-20	991001041-20	O型密封圈S5	O type sealing ring	1	
42	M080500810	繞線器螺釘	Bobbin screw	3	
43	991001043	割線刀	Knife	1	
44	S093574005	割線刀螺釘	Knife screw	2	
45	991001045	繞線夾線器組件	Thread tension asm.	1	
45-1	991001045-1	夾線螺母	Tension nut	1	
45-2	991001045-2	夾線螺釘	Tension post	1	
45-3	991001045-3	夾線彈簧	Tension spring	1	
45-4	991001045-4	夾線板	Thread tension disk presser	2	
45-5	991001045-5	過線板	Thread tension guide	1	
45-6	991001045-6	夾線螺母(下)	Tension nut	1	
46	280001046	電控	Motor cover	1	
47	M180500835	電機罩殼緊固螺釘	Screw	4	
48	3801202101	倒縫燈開關組件	Reverse seam lamp switch assembly	1	
49	28001049	大線勾	Presser bar thread guide	1	
50	991001050	倒縫燈開關支架	Switch support for reverse seam lamp	1	
51	280001065	電子松線器過線橡膠塞	Rubber plug	1	
52	S094762806	倒縫燈開關固定螺釘	Screw	1	
53	S074374007	三眼線勾螺釘	Screw	1	
54	991001054	油線板組件	Oil plate assembly	1	
55	S093574016	油線板固定螺釘	Screw	2	
56	991001056	繞線器墊片	Bobbin Washer	1	
57	991001057	防油板墊片	Grease plate gasket	1	
58	S15357406	大線勾緊定螺釘	Screw	1	
59	280001063	操作面板出線橡膠塞	Rubber plug	1	
60	991001058	橡膠塞	Rubber plug	1	

2.上軸/挑線部件 MAIN SHAFT & THREAD-UP LEVER COMPONENTS



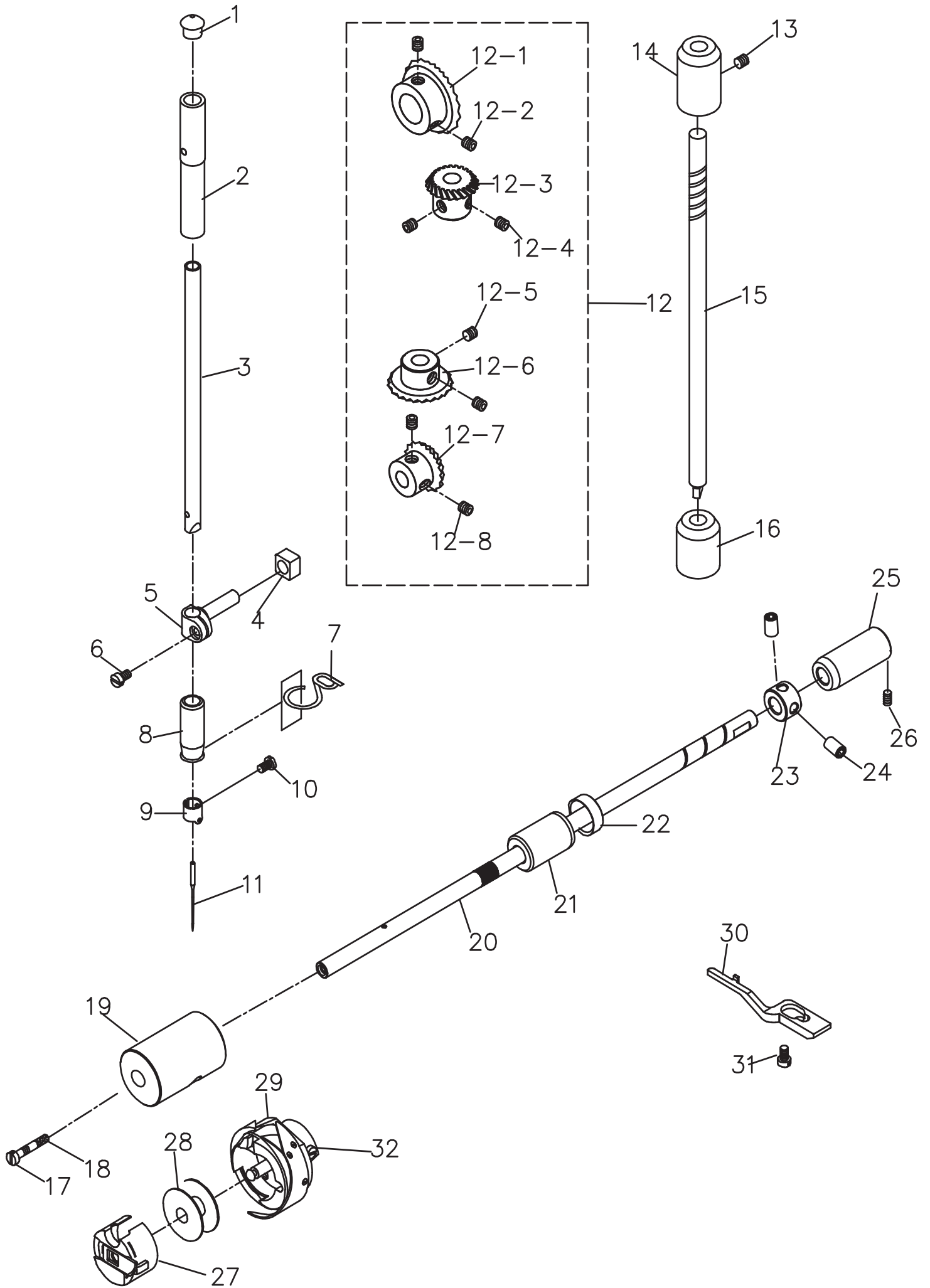
2.上軸/挑線部件 MAIN SHAFT & THREAD-UP LEVER COMPONENTS

序號 Ref.NO.	新編號 new part NO.	名稱 Part name	Name of parts	數量 Qty	備註 Note
1	991002001	挑线连杆销螺钉	Screw 15/64 × 28 L=10.5	1	
2	991002002	挑线连杆销	thread take-up crank shaft	1	
3	991002003	曲柄油量限制毡	Roller felt	1	
	991002004	挑线连杆组件	thread take-up lever asm	1	
4	991002004H	挑线连杆组件(厚料)	thread take-up lever asm (heavy duty)	1	
	991002004D	挑线连杆组件(铝制厚料)	thread take-up lever asm	1	
5	991002005	挑线杆滚针轴承	Needle bearing	2	
6	991002006	挑线曲柄	Needle bar crank	1	
	991002007H	挑线曲柄(厚料)	Needle bar crank (heavy duty)	1	
7	991002007	针杆连杆	Needle bar crank rod	1	
8	991002008	挑线曲柄左旋螺钉	Left screw 9/64 × 40 L=4.8	1	
	991002009	针杆曲柄组件	Needle bar crank asm	1	
9	991102009H	针杆曲柄组件(厚料)	Needle bar crank asm (heavy duty)	1	
9-1	S127142816	针杆曲柄紧固螺钉	Screw 9/32 × 28 L=16	1	
9-2	S116354006	挑线曲柄定位螺钉	Screw 1/4 × 40 L=6	2	
9-3	991002009-3	定位螺丝O型圈	Rubber O ring	1	
9-4	S077142815	针杆曲柄定位螺钉	Screw 9/32 × 28 L=15.5	1	
9-5	991002009-5	针杆曲柄	Needle bar crank	1	
10	991002010	送料偏心轮组件	Feed drive eccentric cam asm.	1	
10-1	S076354011	送料偏心轮螺钉	Screw 1/4 × 40 L=11	2	
10-2	991002010-2	送料偏心轮	Feed drive eccentric cam	1	
11	S093574006	送料偏心轮盖板螺钉	Screw 9/64 × 40 L=6	2	
12	991002012	上轴后套	Mainshaft back bush	1	
13	991002013	上轴后套油封	Oil seal of mainshaft back bush	1	
14	991002014	上轴挡圈螺丝	Snap ring	1	
15	991002015	上轴挡圈	Thrust collar asm	1	
16	S116354006	上轴挡圈螺钉	Screw 1/4x40 L=6	2	
17	991002017	上轴前轴套	Main shaft front bushing asm.	1	
18	991002018	上轴中轴套	Bushing intermediate	1	
19	991002019	挑线杆橡皮套	Rubber	1	
20	991002020	挑线连杆销供油线	Thread take-up crank shaft felt	1	
21	M140500806	手轮螺钉	Screw	2	
22	280002022	手轮	Hand wheel	1	
23	991002023	上轴	Main shaft, upper	1	
24	991002024	上轴油量调节销	Oil amount adjusting pin	1	
25	991002025	上轴油量调节销O型圈	Rubber ring	1	
26	991002026	送料偏心轮盖板	Thrust collar	1	
27	S145952808	上轴中轴套螺钉	Screw	1	
28	991002028	联轴器(A)	Connect block A	1	
29	M140601008	联轴器螺钉	Screw M6 × 6	3	
30	991002030	联轴器(B)	Connect block B	1	
31	M140601006	联轴器(B)固定螺钉	Screw	3	

2.上軸/挑線部件 MAIN SHAFT & THREAD-UP LEVER COMPONENTS

序號 Ref.NO.	新編號 new part NO.	名稱 Part name	Name of parts	數量 Qty	備註 Note
32	991002032	直驱电机组件	Motor asm.	1	
	991002032D	直驱电机组件(三代)	Motor asm.	1	
33	M180500822	电机安装螺钉M5X22	Screw	4	
34	991002034	电机安装螺钉垫片	Washer	4	

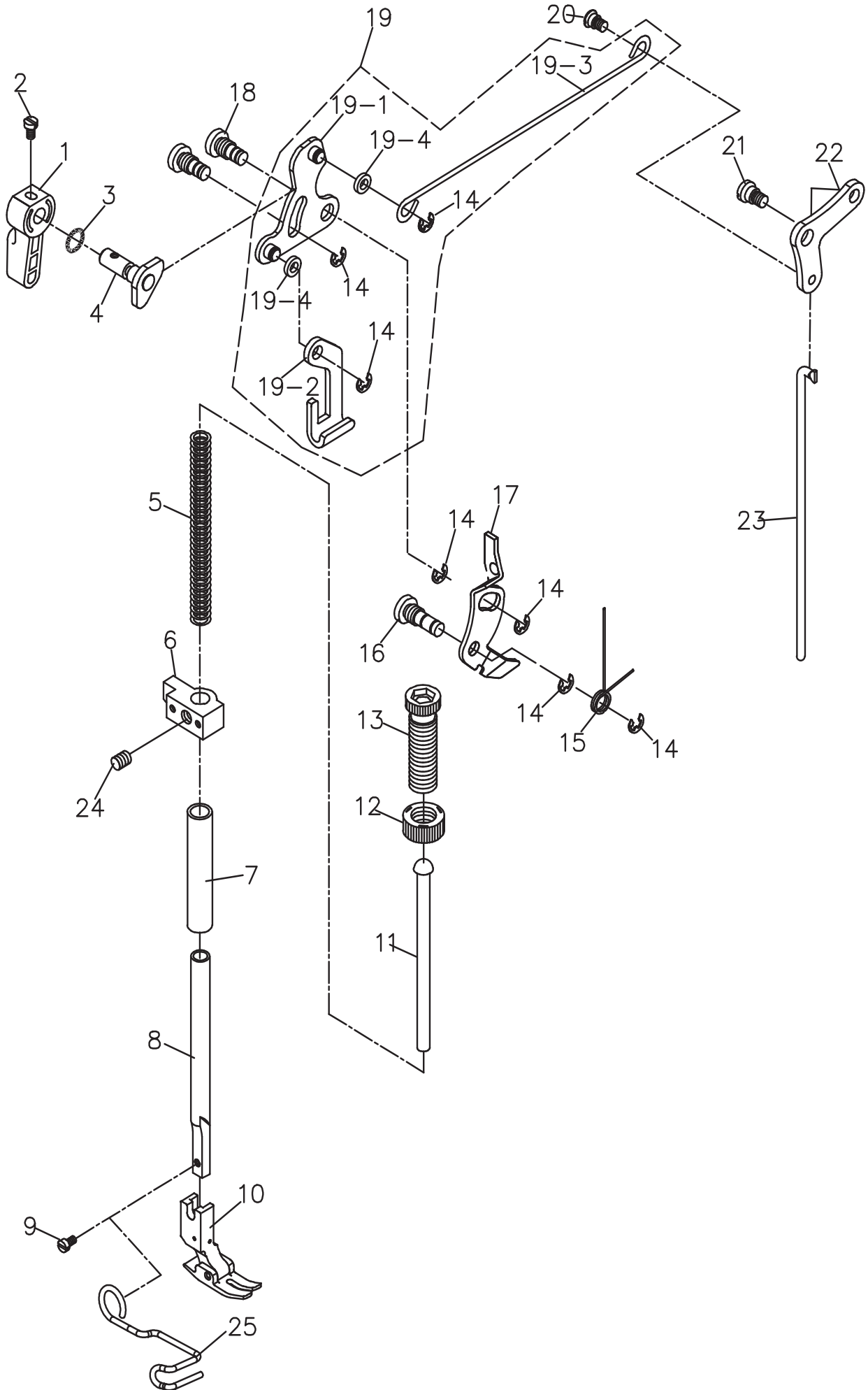
3. 針桿/豎軸/下軸部件 NEEDLE BAR, UPRIGHT SHAFT & HOOK DRIVING SHAFT COMPONENTS



3. 針桿/豎軸/下軸部件 NEEDLE BAR, UPRIGHT SHAFT & HOOK DRIVING SHAFT COMPONENTS

序號 Ref.NO.	新編號 new part NO.	名稱 Part name	Name of parts	數量 Qty	備註 Note
1	991003001	針杆上孔塞	Upper Cap	1	
2	991003002	針杆上套	Needle bar bushing upper	1	
3	991003003	針杆	Needle bar	1	
	991003003H	針杆(厚料)	Needle bar (heavy duty)	1	
4	280002004	針杆連接柱滑塊	Slide block	1	
5	991003004	針杆連接柱	Needle rod holder asm.	1	
6	S073574007	針杆連接柱螺釘	Screw 9/64 × 40 L=7.5	1	
7	991003007	針杆下套線鈎	Needle bar thread guide	1	
8	991003008	針杆下套	Needle bar bushing lower	1	
9	991003010	針杆過線環	Needle bar thread guide	1	
10	S083184405	機針螺釘	Screw 1/8 × 44 L=4.8	1	
11	991003011	機針	Needle DBx1 #14	1	
	991003011H	機針 DPx5 #21	Needle DPx5 #21	1	
12	991003012	傘齒輪組件	Gear pinion asm.	1	
12-1	991003014	上軸傘齒輪	Gear asm.	1	
12-2	S116354008	傘齒輪螺釘	Screw 1/4 × 40 L=8	2	
12-3	991003016	豎軸上傘齒輪	Pinion asm.	1	
12-4	S116354008	傘齒輪螺釘	Screw 1/4 × 40 L=8	2	
12-5	S116354008	傘齒輪螺釘	Screw 1/4 × 40 L=8	2	
12-6	991003019	豎軸下齒輪	Gear asm.	1	
12-7	991003021	下軸傘齒輪	Pinion asm.	1	
12-8	S116352808	傘齒輪螺釘	Screw	2	
13	S145952808	豎軸上套緊固螺釘	Screw	1	
14	991003017	豎軸上軸套	Upright shaft bushing,lower	1	
15	991003014	豎軸	Upright shaft	1	
16	991003017	豎軸下軸套	Upright shaft bushing,lower	1	
17	991003028	下軸限油螺釘	Oil seal screw	1	
18	991003027	下軸限油芯	Oil wick	1	
19	991003026	下軸前軸套	Lower shaft front metal	1	
20	991003022	下軸	Lower shaft	1	
21	991006047	下軸中套	Lower axle sleeve	1	
22	280002022	下軸中套油封	Oil Seal	1	
23	991003020	下軸擋圈	Thrust collar asm.	1	
24	S074374005	下軸擋圈螺釘	Screw 11/64 × 40 L=5	2	
25	991003018	下軸後軸套	Bushing rear	1	
26	S145952808	下軸後軸套螺釘	Screw	1	
27	991003030	梭殼	Bobbin case	1	
28	991003029	梭芯	Bobbin	1	
29	991003015	旋梭	Hook asm.	1	
30	991003023	旋梭定位勾	Bobbin case holder	1	
31	S084374011	旋梭定位勾螺釘	Screw SM11/64 × 40 L=11	1	
32	991003032	旋梭螺釘	Screw	3	

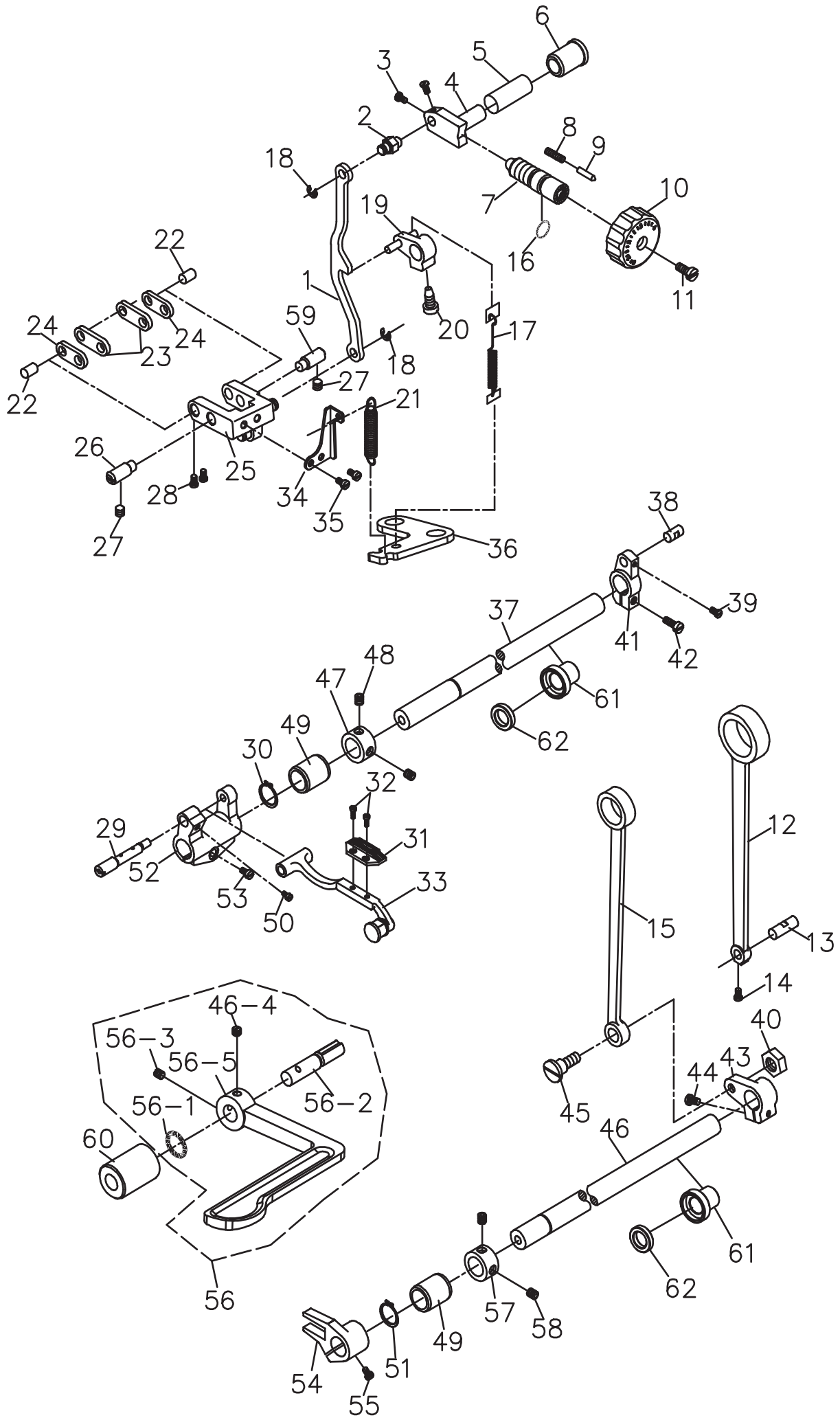
4. 壓桿部件 HAND LIFTER COMPONENTS



4.壓桿部件 HAND LIFTER COMPONENTS

序號 Ref.NO.	新編號 new part NO.	名稱 Part name	Name of parts	數量 Qty	備註 Note
1	991004001	压脚扳手	Presser foot hand lifter	1	
2	991004002	压脚扳手螺钉	Screw 9/64 × 40 L=10	1	
3	991004003	压脚扳手轴O型圈	Rubber ring	1	
4	991004004	压脚扳手凸轮部件	hand lifter cam asm	1	
5	991004029	调压簧	Presser adjurting spring	1	
	991004029H	调压簧(厚料)	Presser adjurting spring H	1	
6	280004006	压杆导架	Presser bar guide bracket	1	
7	991004005	压杆轴套	Presser bar bushing lower	1	
8	991004031	压杆	Presser bar	1	
9	S073574011	压脚螺钉	Screw 9/64 × 40 L=11	1	
	991004009	压脚部件	Presser foot asm	1	
10	991004009H	压脚部件(厚料)	Presser foot asm H	1	
	991004009D	压脚部件(大旋梭)	Presser foot asm (Big hook)	1	
11	991004033	调压导杆	Presser guide bar	1	
12	991004027	调压螺母	Presser adjurting screw nut	1	
	991004027H	调压螺母(厚料)	Presser adjurting screw nut H	1	
13	991004028	调压螺钉	Presser spring regulator	1	
	991004028H	调压螺钉	Presser spring regulator H	1	
14	991004008	挡圈	E-ring 5	7	
15	991004022	松线顶板复位簧	Tension release return spring	1	
16	991004026	松线顶板螺纹销	Tension release shaft pin	1	
17	280004017	松线顶板	Thread tension relerse wire	1	
18	991004007	前杠杆螺纹销	Link shaft	2	
19	280004019	前杠杆组件	Knee lifting cross rod asm	1	
19-1	280004019-1	抬压脚前杠杆	Hand lifter link	1	
19-2	991004032-2	压脚升降板	Lifting lever	1	
19-3	991004032-3	抬压脚拉杆	Knee lifting cross rod	1	
19-4	280004019-4	垫圈	Washer	2	
20	991004010	抬压脚拉杆螺钉	Hinge screw	1	
21	991004011	后杠杆轴拉螺钉	Hinge screw	1	
22	991004013	抬压脚后杠杆	Lifting lever link	1	
	991004013-H	抬压脚后杠杆(厚料)	Lifting lever link(Thick material)	1	
23	280004023	抬压脚顶杆	Knee lifter connecting rod	1	
24	S126354006	导架螺钉	Screw	1	
25	991004036	压脚保护架	Presser foot protector	1	

5.送料部件 FEED MECHANISM COMPONENTS



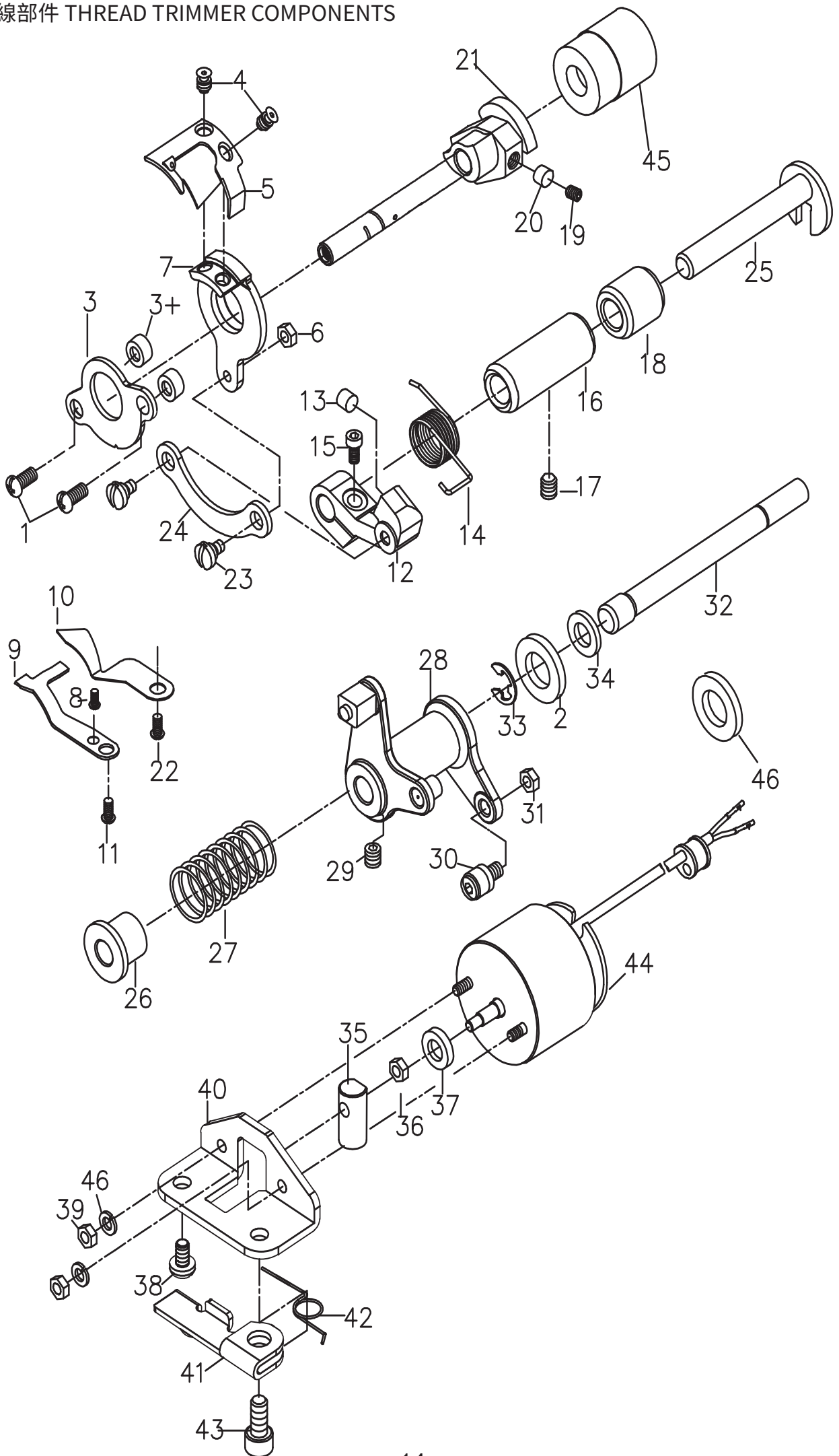
5.送料部件 FEED MECHANISM COMPONENTS

序號 Ref.NO.	新編號 new part NO.	名稱 Part name	Name of parts	數量 Qty	備註 Note
1	991005001	倒送料连杆	Reverse feed adjust rod	1	
	991005001D	倒送料连杆(大旋梭)	Reverse feed adjust rod(big hook)	1	
2	991005002	倒送料连杆销	Reverse feed regulator pin	1	
3	S043574006	倒送料连杆销螺钉	screw	2	
3+	M090500806	送料调节器紧固螺钉	screw	2	
4	991005004	送料调节器	Feed regulator	1	
	991005004D	送料调节器(大针距)	Feed regulator (Big needle distance)	1	
5	991005005	送料调节器轴套	Feed regulator bushing	1	
6	991005006	送料调节器轴	Feed regulator shaft	1	
7	991005007	针距调节螺杆	Feed regulator screw	1	
8	991005008	止动销弹簧	Spring	1	
9	991005009	止动销	Feed adjust pin	1	
10	280005010	针距旋钮 (0-5)	Needle distance knob(0-5)	1	
11	S074762818	针距旋钮螺钉	Screw 3/16 × 28 L=18	1	
12	991005012	送料连杆	Rocker shaft connecting rod	1	
13	991005013	送料连杆销	Walking foot long pin	1	
14	S083574004	送料连杆销螺钉	Screw 9/64 × 40 L=4	1	
15	991005015	拾牙连杆	Connecting rod	1	
16	991005016	针距调节螺杆O型圈	Rubber ring	1	
17	991005017	摆动板座复位簧	Feed reverse spring	1	
18	991005018	挡圈E5	E-ring 5	2	
19	991005019	倒送料曲柄组件	Feed reverse arm asm.	1	
	991005019D	倒送料曲柄组件(大针距)	Feed reverse arm asm(Big needle		
20	S074762815	倒送料曲柄螺钉	Feed reverse arm screw	1	
21	991005021	倒送料拉簧	Spring	1	
22	991005022	短摆动板连接销	Walking foot short pin	2	
23	991005023	长摆动板	Connecting link long pin	2	
24	991005024	短摆动板	Connecting link short pin	2	
25	991005025	摆动座	Feed adjust link asm	1	
26	991005026	摆动板座左销	Adjusting link fulcrum shaft	1	
27	991002001	左右销螺钉	Screw 15/64 × 28 L=7	2	
28	S123574005	连杆销螺钉	Screw 9/64 × 40 L=5	2	
29	991005029	牙架偏心销	Feed bar shaft	1	
30	991005030	送布轴轴用挡圈	Retaining ring	1	
	991005031	送布牙	Feed dog	1	
31	991005031H	送布牙(厚料/3排牙)	Feed dog (H. 3 row)	1	
	991005031D	送布牙(大针距/3排牙)	Feed dog (big distance/3 row)	1	
	0303D	送布牙(大旋梭/3排牙)	Feed dog (big hook, 3 row)	1	

5.送料部件 FEED MECHANISM COMPONENTS

序號 Ref.NO.	新編號 new part NO.	名稱 Part name	Name of parts	數量 Qty	備註 Note
32	S073184406	送布牙螺钉	Screw 1/8 × 44 L=6	2	
	991005033	牙架部件	Feed bar asm	1	
33	991005033D	牙架部件(大旋梭)	Feed bar asm (big hook)	1	
34	991005034	摆动板复位板	Adjusting link spring guide	1	
35	S074374007	复位板紧固螺钉	Screw 11/64 × 40 L=7	2	
36	991005036	拉簧固定板	Feed spring hood	1	
37	991005037	送布轴	Feed rocker shaft	1	
38	991005038	送布曲柄销	Walking foot middle pin	1	
39	S073574008	曲柄销螺钉	Screw 9/64 × 40 L=8	1	
40	N217142805	拾牙连杆轴位螺母	Nut 9/32 × 28	1	
	991005041	送布曲柄	Feed rocker shaft crank	1	
41	991005041D	送布曲柄 (大针距15mm)	Feed rocker shaft crank	1	
42	S074762815	送布曲柄螺钉	Screw 3/16 × 28 L=15	1	
43	991005043	拾牙后曲柄	Lifting rocker asm.	1	
44	S074762815	拾牙后曲柄螺钉	Screw 3/16 × 28 L=15	1	
45	991005045	拾牙连杆轴位螺钉	Hinge screw	1	
46	991005046	拾牙轴	Feed driving shaft	1	
47	991005047	送布轴挡圈	Thrust collar asm.	1	
48	S126354004	送布轴挡圈螺钉	Screw 1/4 × 40 L=4	2	
49	991005049	送布轴前轴套	Feed rocker shaft bushing	2	
50	S084374007	牙架销螺钉	Screw 11/64 × 40 L=7	2	
51	991005051	拾牙轴轴用挡圈	Retaining ring	1	
52	991005052	牙架座 (牙架曲柄)	Feed bar crank asm.	1	
53	S074762812	牙架座螺钉	Screw 3/16 × 28 L=12	1	
54	991005054	拾牙叉	Driving shaft crank asm.	1	
55	S084374012	拾牙叉螺钉	Screw 11/64 × 40 L=12	1	
56	280005056	倒送料扳手组件	Reverse feed control lever asm.	1	
56-1	991005056-1	倒送料轴O型圈	Rubber ring	1	
56-2	991005056-2	倒送料轴	Feed reverse shaft	1	
56-3	S145952808	倒送料扳手螺钉	Screw	1	
56-4	S14592810	倒送料扳手定位螺钉	Screw	1	
56-5	280005056-5	倒送料扳手	Reverse frrd control lever	1	
57	991005057	拾牙轴挡圈	Thrust collar	1	
58	S126354004	拾牙轴挡圈螺钉	Screw 1/4x40 L=6	2	
59	991005059	摆动轴板座右销	Adjusting link fulcrum shaft	1	
60	991005060	倒送料轴轴套	Axle Sleeve	1	
61	280005061	送布、拾牙中套	Axle Sleeve	2	
62	280005062	送布、拾牙中套油封	Oil Seal	2	

6.自動切線部件 THREAD TRIMMER COMPONENTS



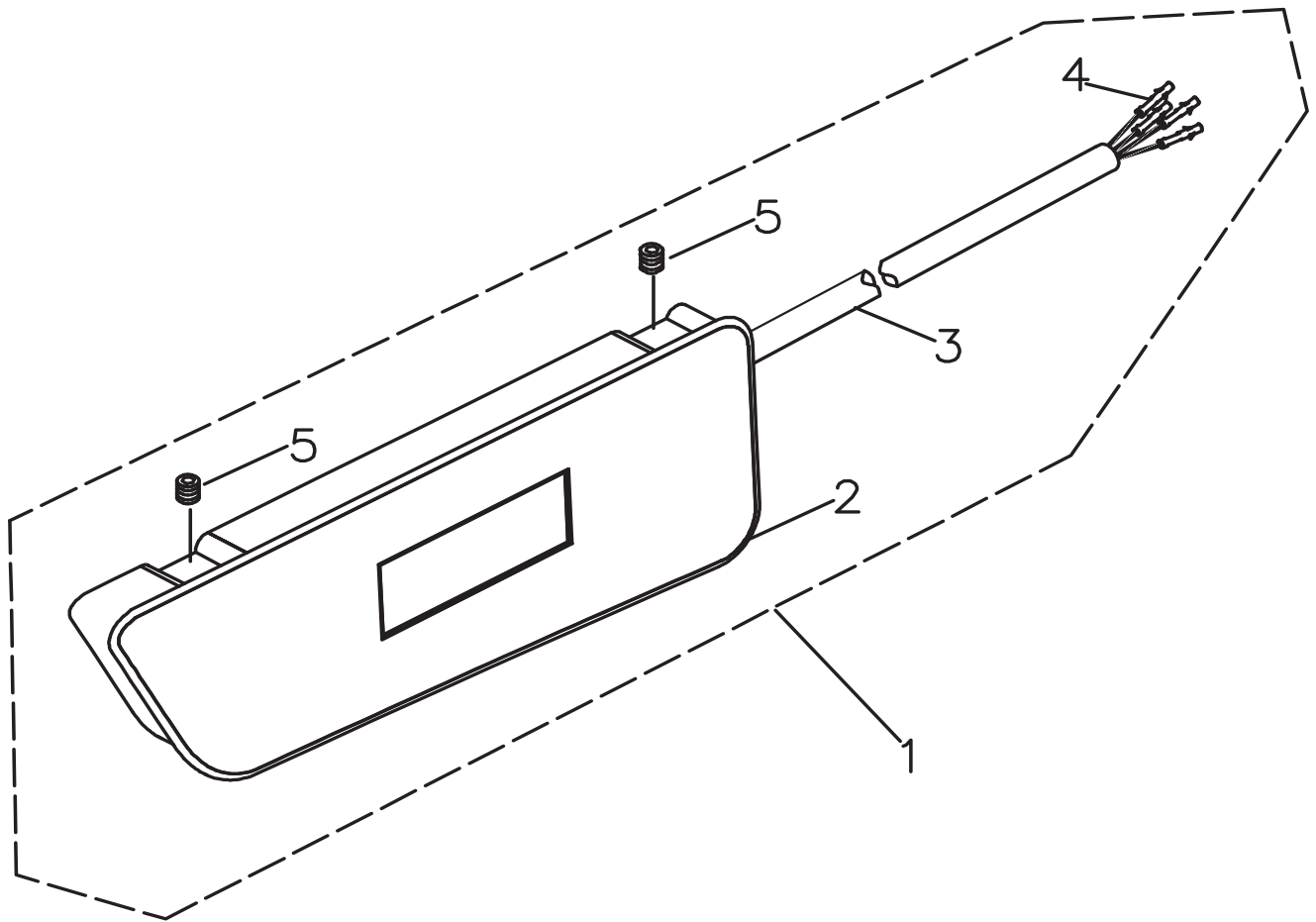
6.自動切線部件 THREAD TRIMMER COMPONENTS

序號 Ref.NO.	新編號 new part NO.	名稱 Part name	Name of parts	數量 Qty	備註 Note
1	S094374012	螺釘Ⅱ/64” x40 L=12	Screw SM11/64x40 L=12	2	
2	991006049	电磁铁垫片	Washer	1	
3	991006003	刀架压板	Partiality shank	1	
3+	991006003+	刀架压板垫圈	Partiality shank washer	2	
4	991006004	动刀固定螺钉	Screw	2	
	991006005	动刀	Motorial knife	1	
5	991006005H	动刀（厚料）	Motorial knife (heavy duty)	1	
	991006005D	动刀（大旋梭）	Motorial knife (big hook)	1	
6	991006006	螺母SM11/64” x40	Nut SM11/64x40	1	
	991006007	动刀架	Knife bracket	1	
7	991110008	动刀架（9911机型）	Knife bracket	1	
8	S043574006	定刀调节螺钉	Screw	1	
	991006009	割线刀	Secant knife	1	
9	991006009D	割线刀（大旋梭）	Secant knife(big hook)	1	
10	991006010	分线片	Protect needle patch	1	
11	S083574004	螺釘SM9/64” x40 L=4	Screw SM9/64x40 L=4	1	
12	991006012	切刀驱动曲柄	Thread shear rock arm	1	
13	991006013	驱动曲柄止动块	Positioning block	1	
14	991006014	弹簧	Spring	1	
15	S094763214	螺釘SM,3/16” x32 L=14	Screw SM3/16x32 L=14	1	
16	991006016	切线轴套	Axle sleeve	1	
17	S125952806	螺釘	Screw SM15/64x28 L=6	1	
18	991006018	驱动曲柄轴衬套	Short bush	1	
19	S156354010	螺釘SM1/4” x40 l=10	Screw SM1/4x40 L=10	2	
20	991006020	切线凸轮垫	Pole	2	
21	991006021	凸轮	Thread shear cam	1	
22	S073574006	螺釘SM9/64” x40 L=5	Screw SM9/64x40 L=6	1	
23	991006023	连杆螺钉	Screw	2	
24	991006024	连杆	Knife shaft connecting rod	1	
25	991006025	切刀驱动曲柄轴	Cutter crank shaft	1	
26	991006026	扭簧端盖	Spring cover	1	
27	991006027	切线凸轮复位弹簧	Spring	1	
28	991006028	切线凸轮曲柄组件	Thread shear rock arm shaft	1	
29	S116354006	螺釘SM11/64” x40	Screw	1	
30	991006030	滚柱	Rool shaft assy	1	
31	991006031	螺母	Nut	1	
32	991006032	切刀驱动轴	Thread shear shaft	1	
33	991006033	挡圈E6	Retaining ring	1	
34	991006034	电磁铁缓冲垫	Magnetic plug cushion mat	1	
35	991006035	切线电磁铁顶销	Magnetic plug pin	1	
36	991006036	螺母SM1/4” x40	Nut SM1/4x40	1	
37	991006037	垫圈	Washer	1	
38	S075952810	螺釘	Screw	1	
39	991006039	螺母M4	Nut M4	2	

6.自動切線部件 THREAD TRIMMER COMPONENTS

序號 Ref.NO.	新編號 new part NO.	名稱 Part name	Name of parts	數量 Qty	備註 Note
40	991006040	切线电磁铁支架	Magnetic plug cushion mat	1	
41	991006041	松线座	Thread loose seat	1	
42	991006042	弹簧	Spring	1	
43	991006043	螺钉	Screw	1	
44	991006044	剪线电磁铁组件	Magnetic solenoid asm	1	
45	991006047	下轴中套	Bushing,lower shaft	1	
46	991006048	垫圈4.5x8x0.5	Washer 4.5x8x0.5	2	

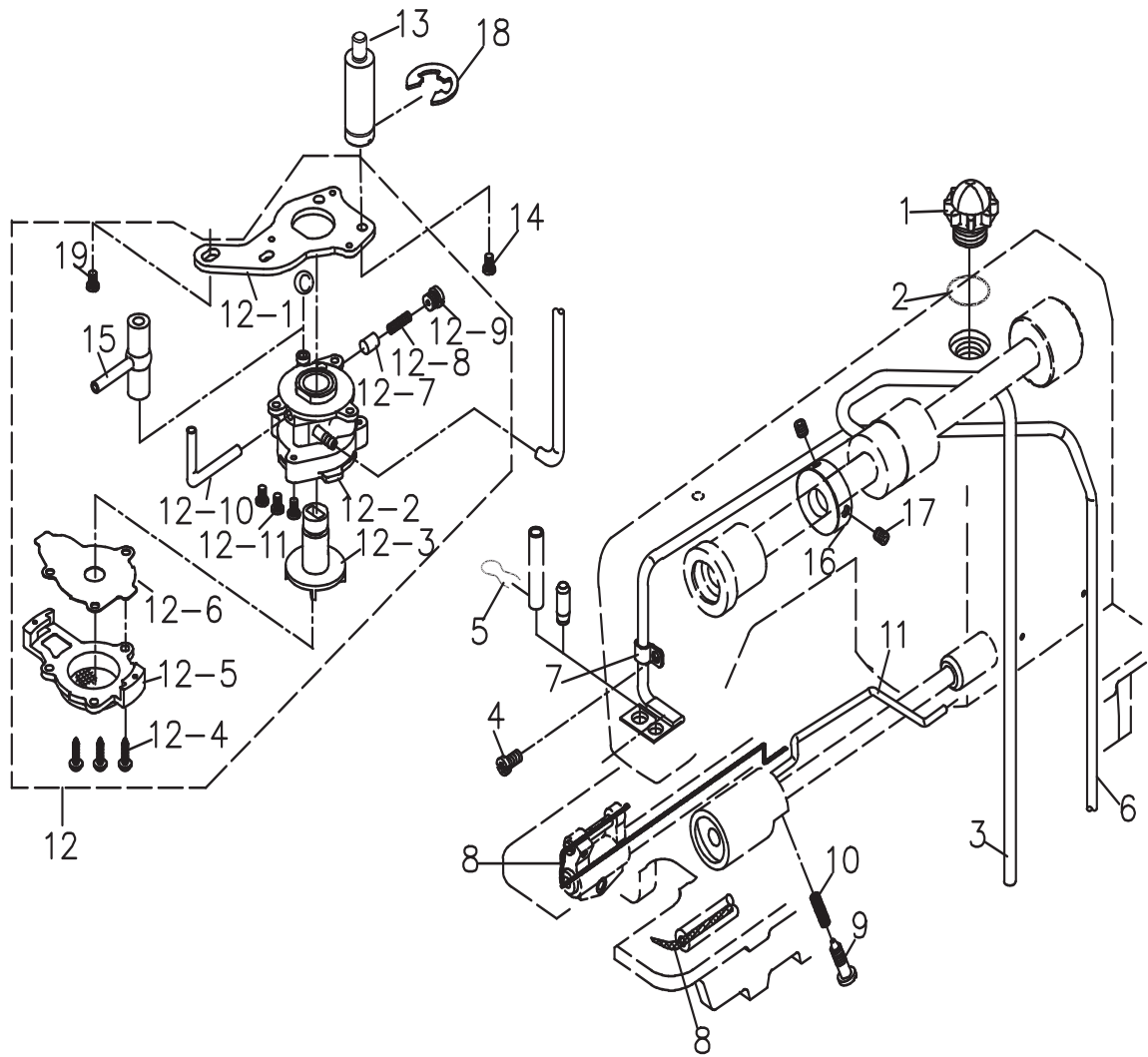
7. 電子夾線器, 選針盒部件/
ELECTRONIC CONDUCTOR HOLDER
NEEDLE SELECTION BOX COMPONENTS



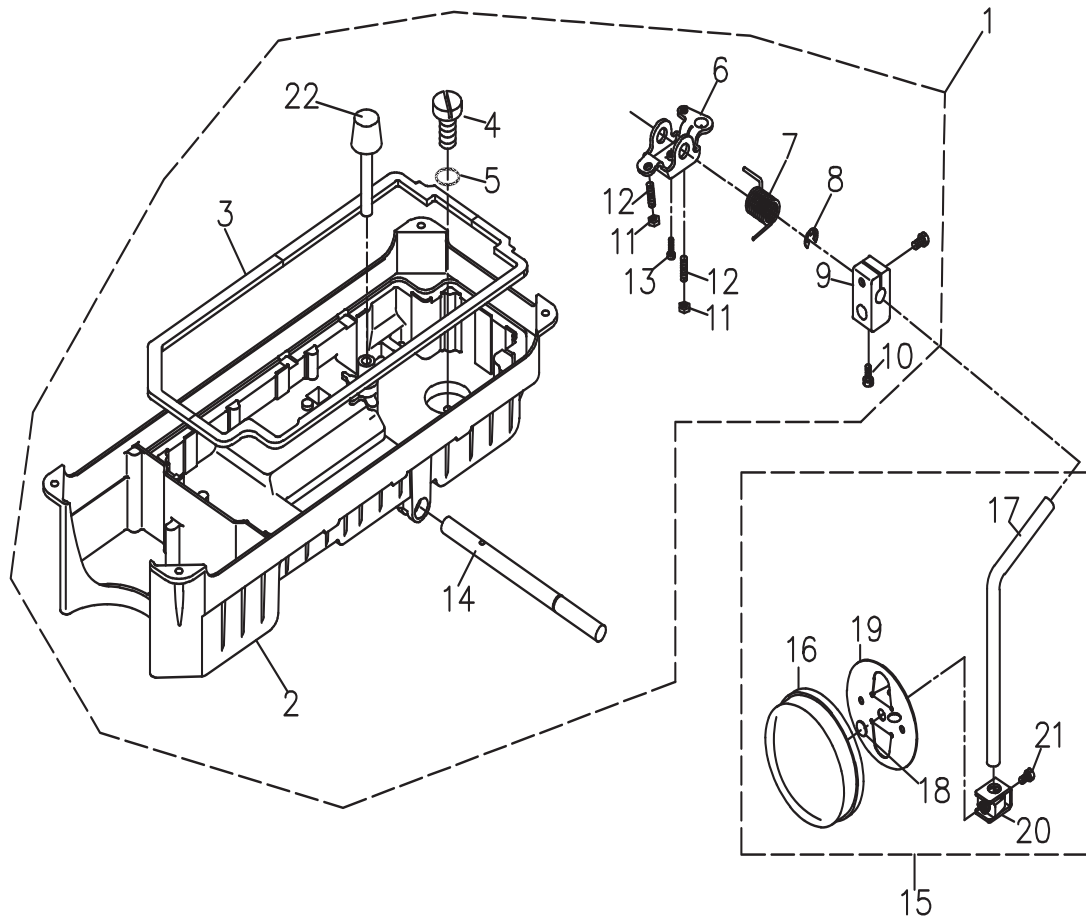
7.電子夾線器,選針盒部件/ELECTRONIC CONDUCTOR HOLDER NEEDLE SELECTION BOX COMPONENTS

序號 Ref.NO.	新編號 new part NO.	名稱 Part name	Name of parts	數量 Qty	備註 Note
1	281008001	选针盒组件	Needle selection box asm.	1	
2	281008002	选针盒	Needle selection box	1	
3	991008003	电线	2-core cabtyre cord	1	
4	991008004	插针	Contact pin	1	
5	S144374006	螺钉	Screw SM11/64"x40 L=6	2	

8. 潤滑/繞線部件 OIL LUBRICATION COMPONENTS



9. 油盤部件 OIL RESERVOIR COMPONENTS



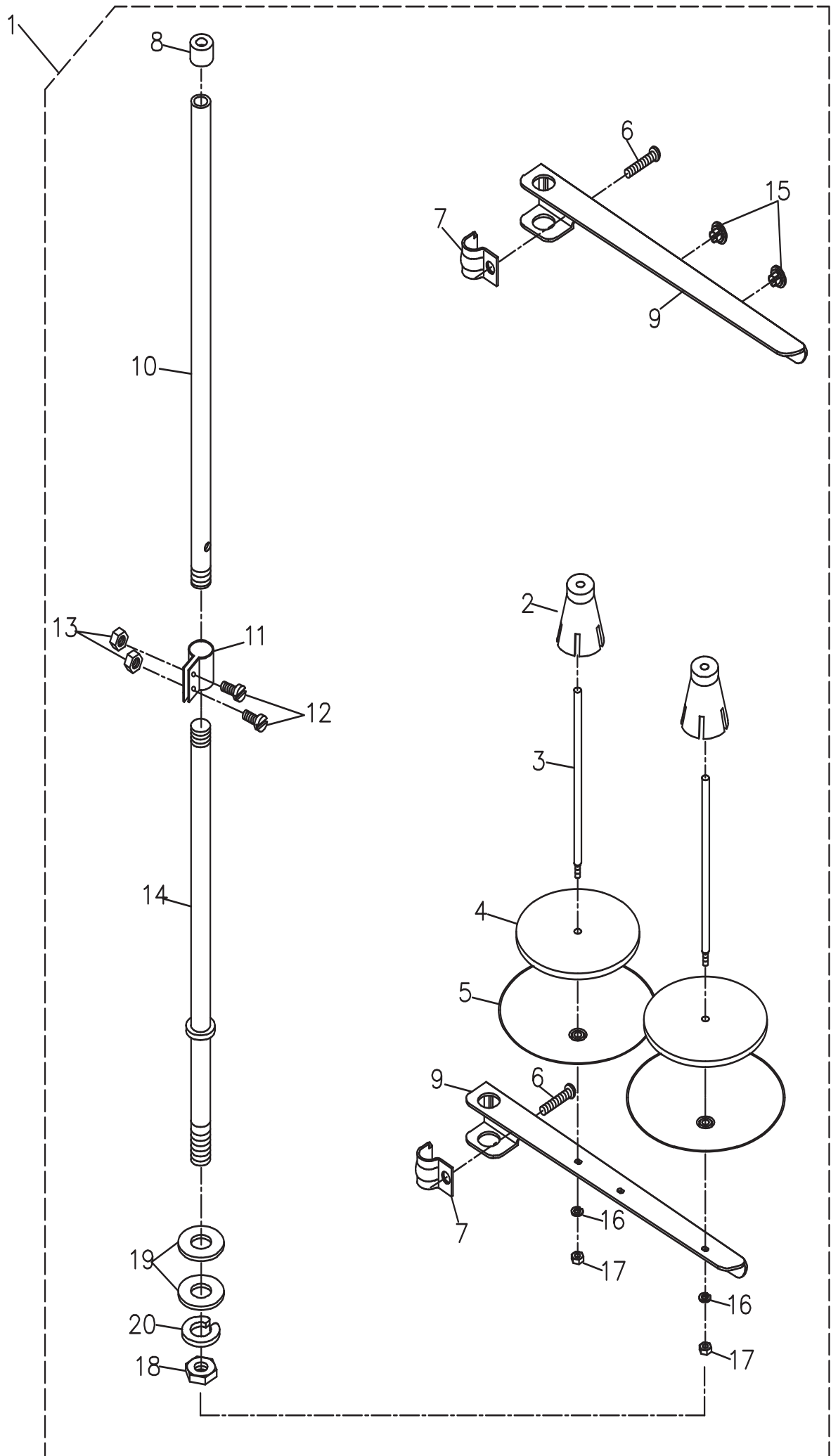
8.潤滑/繞線部件 OIL LUBRICATION COMPONENTS

序號 Ref.NO.	新編號 new part NO.	名稱 Part name	Name of parts	數量 Qty	備註 Note
1	991009001	油窗	Oil sight window	1	
2	991009002	油窗O型圈	Rubber ring	1	
3	991009003	上轴供油管	Main shaft oil tube	1	
4	S094762806	回油管夹螺钉	Screw 3/16x28 L=6	1	
5	991009005	回油毡夹	Oil felt presser	1	
6	991009006	回油管	Oil return tube asm	1	
7	991009007	回油管夹	Holder	1	
8	991009008	送料轴油线	Oil wick	1	
9	991009009	旋梭油量调节螺钉	Oil adjusting screw	1	
10	991009010	旋梭油量调节簧	Spring	1	
11	991009011	旋梭供油管	Oil tube	1	
12	991009012	油泵部件	Lubricating oil pump asm	1	
12-1	991009012-1	油泵安装板	Oil pump installing base	1	
12-2	991009012-2	油泵体	Oil pump	1	
12-3	991009012-3	油泵叶轮	Oil pump impeller	1	
12-4	991009012-4	油泵盖螺钉	Screw D=3 l=10	3	
12-5	991009012-5	油泵盖	Lubricating oil pump cover	1	
12-6	991009012-6	油泵叶轮托板	Oil pump impeller cover	1	
12-7	991009012-7	回油柱塞	Plunger	1	
12-8	991009012-8	柱塞簧	Plunger spring	1	
12-9	991009012-9	柱塞螺钉	Plunger screw	1	
12-10	991009012-10	下轴供油管	Hook driving shaft oil tube	1	
	991009012-10+	下轴供油管(四自动)	Hook driving shaft oil tube	1	
12-11	M070300508	油泵安装螺钉	Screw M3 L=8	3	
13	991009013	油泵连接螺柱	Oil pump support,large	1	
14	S074374010	油泵螺钉	Screw	1	
15	991009015	供油管接头	Rubber joint	1	
16	991009016	绕线器驱动轮	Bobbin pulley	1	
17	S144374006	绕线器驱动轮螺钉	Screw	2	
18	991009017	卡簧	Jump ring	1	
19	S075952510	油泵螺钉	Screw 15/64x28 L=10	1	

9.油盤部件 OIL RESERVOIR COMPONENTS

序號 Ref.NO.	新編號 new part NO.	名稱 Part name	Name of parts	數量 Qty	備註 Note
1	991010001	油盤部件	Oil reservoir asm	1	
2	991010002	油盤	Oil reservoir	1	
3	991010003	油盤墊	Oil reservoir gasket	1	
4	S077942407	排油孔螺釘	Screw 5/16x24 L=7	1	
5	991010005	排油孔螺釘O型圈	Rubber ring	1	
6	991010006	抬壓腳双向曲柄	Knee lifting rotating arm	1	
7	991010007	双向曲柄扭簧	Spring	1	
8	991010008	抬壓腳軸開口擋圈	E-ring 10	1	
9	991010009	抬壓腳操縱杆接头	Vertical shaft fitting arm	1	
10	991010010	操縱杆接头螺釘	Screw	2	
11	N210601006	双向曲柄限位調節螺母	Nut M6	2	
12	M120601030	双向曲柄限位調節螺釘	Screw M6 L=30	2	
13	M190601018	双向曲柄螺釘	Screw M6 L=17.5	1	
14	991010014	抬壓腳軸	Knee press cross shaft	1	
15	991010015	操縱杆部件	Knee pan plate asm	1	
16	991010016	操縱杆軟墊	Knee pan plate cover	1	
17	991010017	操縱杆	Knee pan upright shaft	1	
18	991010018	操縱杆墊	Knee pan plate rubber	1	
19	991010019	操縱板	Knee pan plate	1	
20	991010020	操縱杆接头	Knee pan plate support	1	
21	M190601012	接头螺釘	Screw M6 L=12	1	
22	991010022	抬壓腳頂杆	Knee lifter push rod	1	

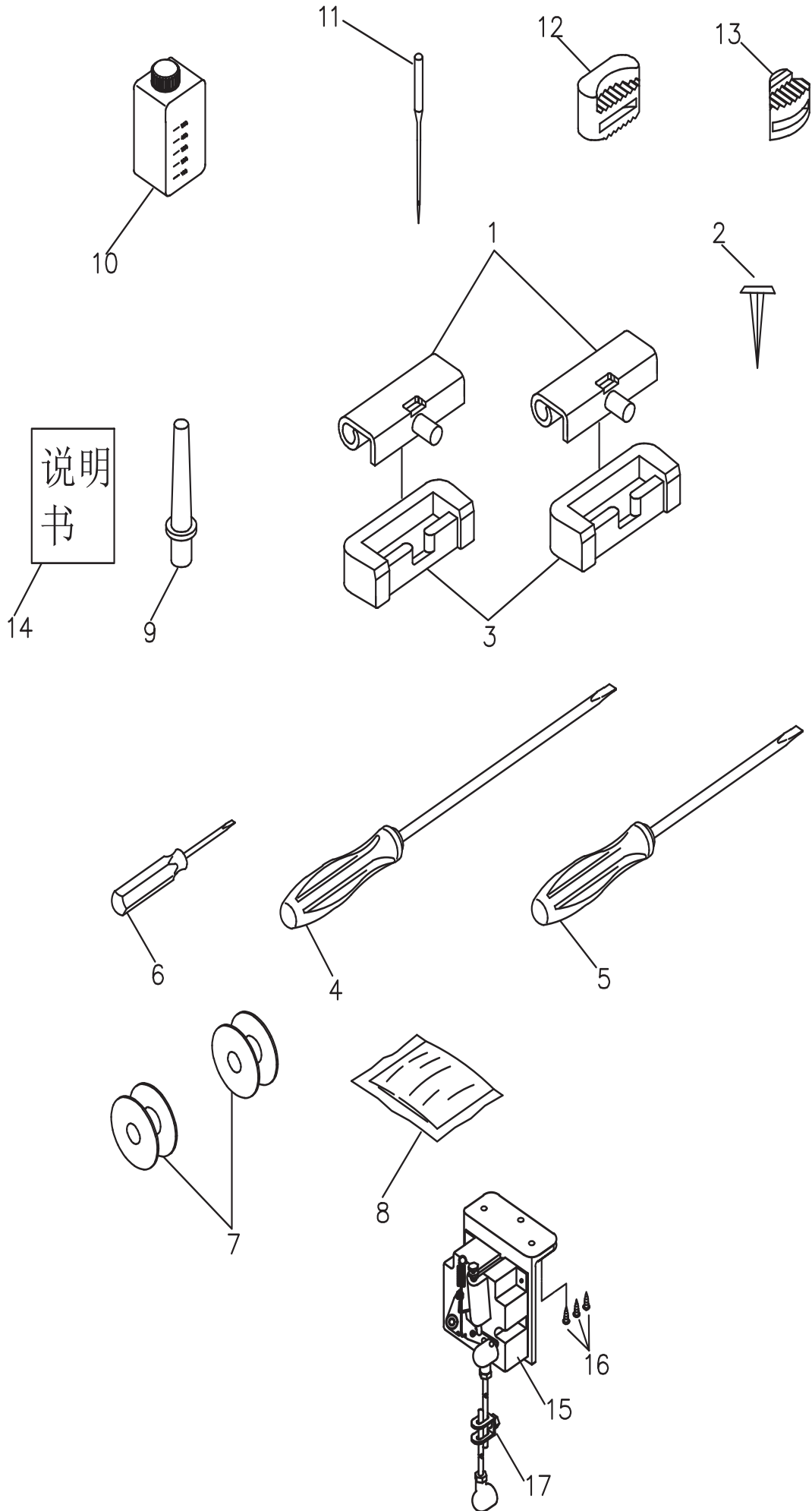
10. 過線架部件 THREAD STAND COMPONENTS



10.過線架部件 THREAD STAND COMPONENTS

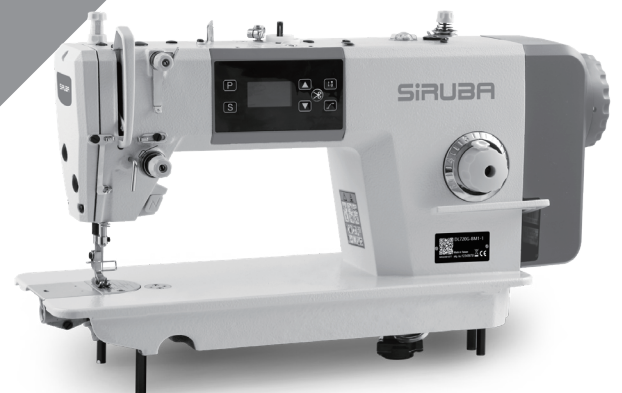
序號 Ref.NO.	新編號 new part NO.	名稱 Part name	Name of parts	數量 Qty	備註 Note
1	991013001	过线架部件	Thread stand asm	1	
2	991013002	线团防松垫	Spool retainer	2	
3	991013003	线盘钉	Spool pin	2	
4	991013004	线盘轮垫	Spool rest cushion	2	
5	991013005	线盘	Spool rest	2	
6	M090601016	线架过线夹螺钉	Screw M6 × 16	2	
7	991013007	线架过线夹	Thread guide arm joint	2	
8	991013008	线架杆顶防护橡皮	Spool rest rod rubber cap	1	
9	991013009	线架过线杆	Spool rest arm	2	
10	991013010	线架杆上节	Spool rest rod upper	1	
11	991013011	接架杆接头	Spool rest rod joint	1	
12	M090500814	接架杆接头螺钉	Screw M5 × 14	2	
13	N210500805	接架杆接头螺母	Nut M5	2	
14	991013014	线架杆下节	Spool rest rod lower	1	
15	991013015	过线圈	Thread guide	2	
16	991013016	线盘钉弹簧垫	Spring washer	2	
17	991013017	线盘钉螺母	Nut M5	2	
18	991013018	线架杆紧固螺母	Nut M6 × 1.5	1	
19	991013019	线架杆紧固螺母垫圈	Washer 16 × 30 × 2.6	2	
20	991013020	紧固螺母弹簧垫圈	Spring washer	1	

11.附件 ACCESSORIES



11.附件 ACCESSORIES

序號 Ref.NO.	新編號 new part NO.	名稱 Part name	Name of parts	數量 Qty	備註 Note
1	991014001	机头连接钩组件	Machine hinge plate asm.	2	
2	991014002	机头连接钩座钉	Nail	4	
3	991014003	机头连接钩座	Machine hinge plate	2	
4	991014004	螺丝刀 (大)	Screw driver,large	1	
5	991014005	螺丝刀 (中)	Screw driver.medium	1	
6	991014006	螺丝刀 (小)	Screw driver.small	1	
7	991014007	梭心	Bobbin	2	
8	991014008	机头罩	Machine head cover	1	
9	991014009	机头支柱	Machine head holder	1	
10	991014010	油箱部件	Oil reservoir asm.	1	
11	991014011	机针 DBxl #14	Needle DBxl #14	4	
	991014011H	机针 DPx5 #21	Needle DPx5 #21	4	
12	991014012	防震垫(A)	quakeproof washer A	2	
13	991014013	防震垫(B)	quakeproof washer B	2	
14	280014014	说明书	Instruction book	1	
15	991014017	控速器	speed controller	1	
16	991014018	控速器安装螺钉	speed controller screw	3	
17	991014019	控速器拉杆	speed controller pull rod	1	



高林股份有限公司
KAULIN MFG. CO., LTD.

由於對產品的改良及更新，本產品使用說明書中與零件圖之產品及外觀的修改恕不事先通知！
The specification and/or appearances of the equipment described in this instruction book & parts list are subject to change because of modification which will without previous notice.
GML-13T03.JUL.2023